

LIVING- IN- DUSTRY

FILLING THE VOIDS
CREATED BY INDUSTRIAL
SITES



SOUTH TOWN

- 1. KING WILLIAM
- 2. LAVACA
- 3. COLLINS GARDEN
- 4. LONE STAR
- 5. ROOSEVELT

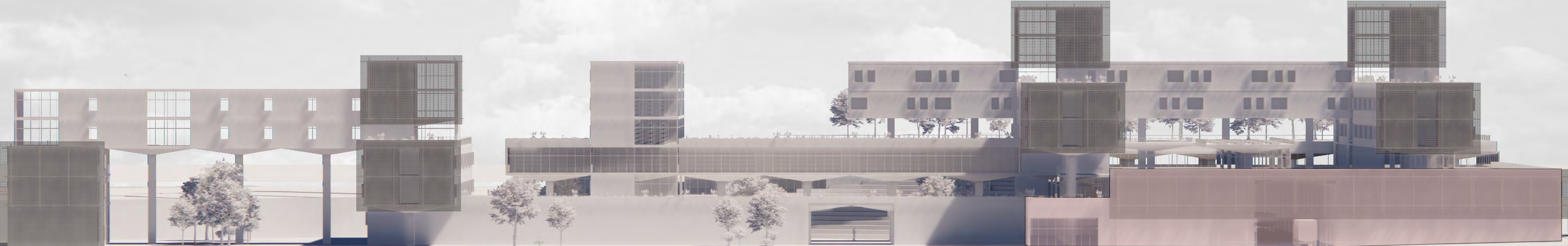
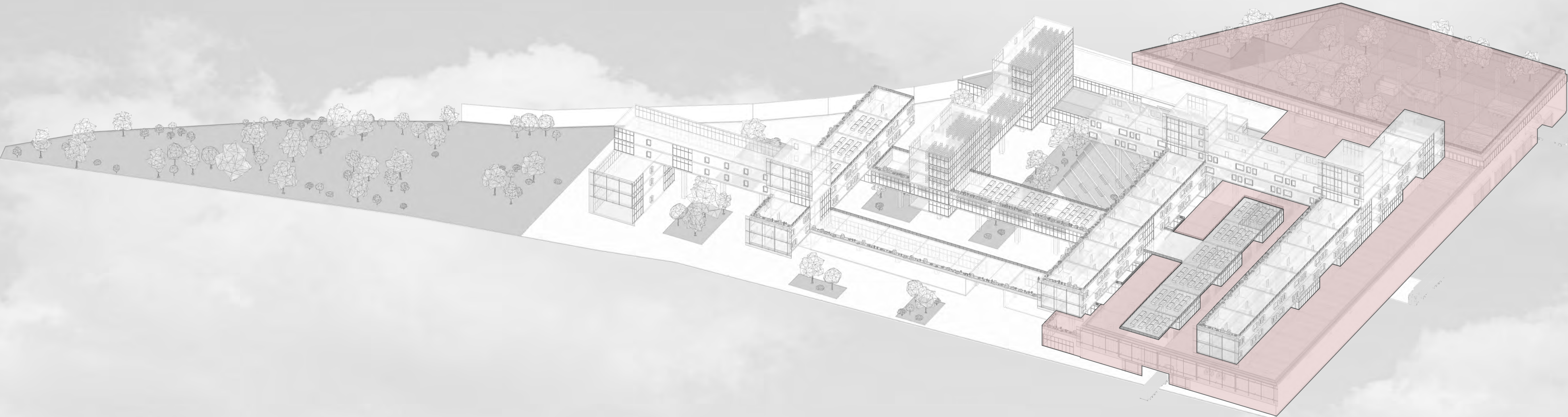


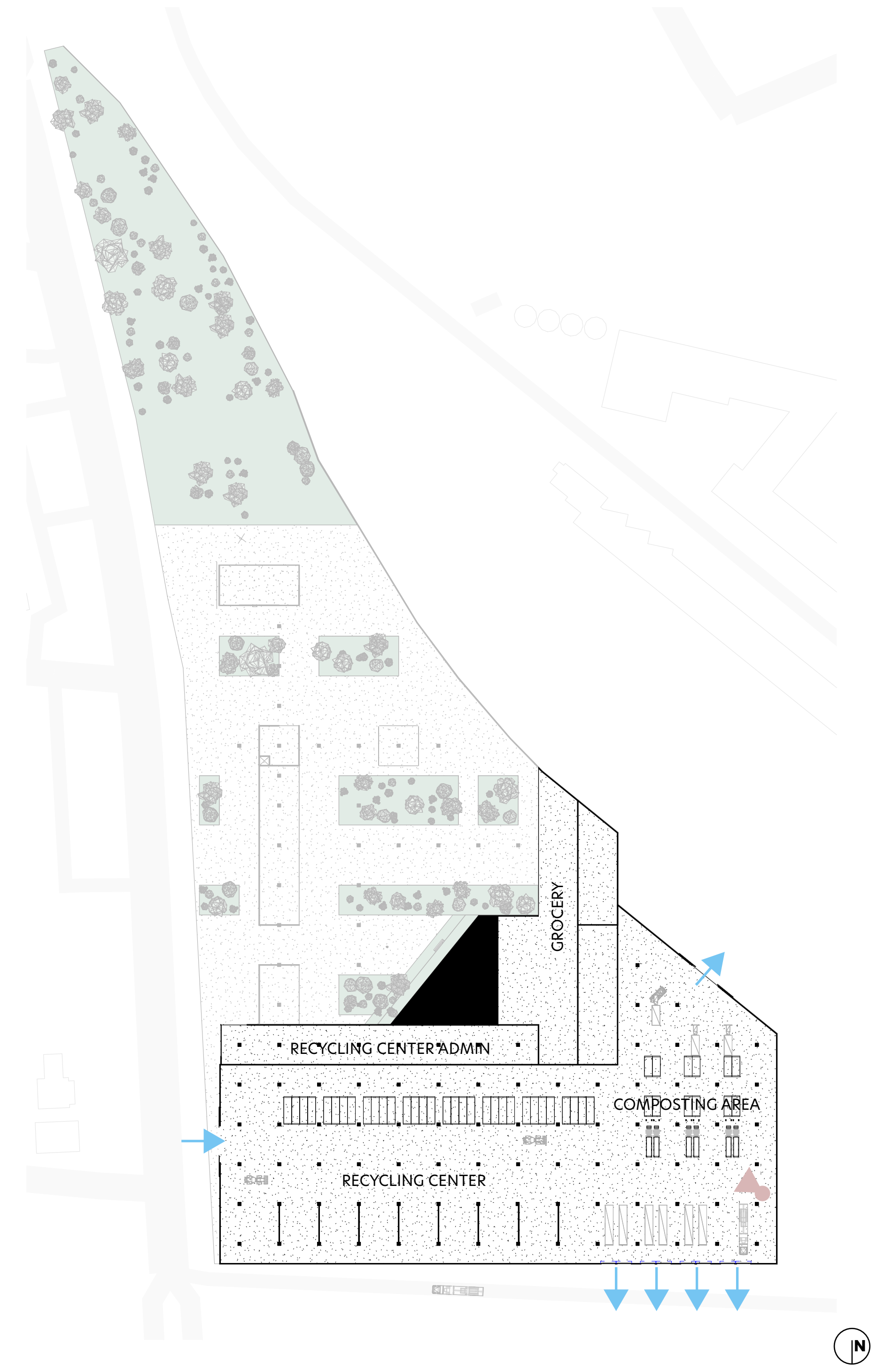




RECYCLING / COMPOSTING

128,000 SQFT





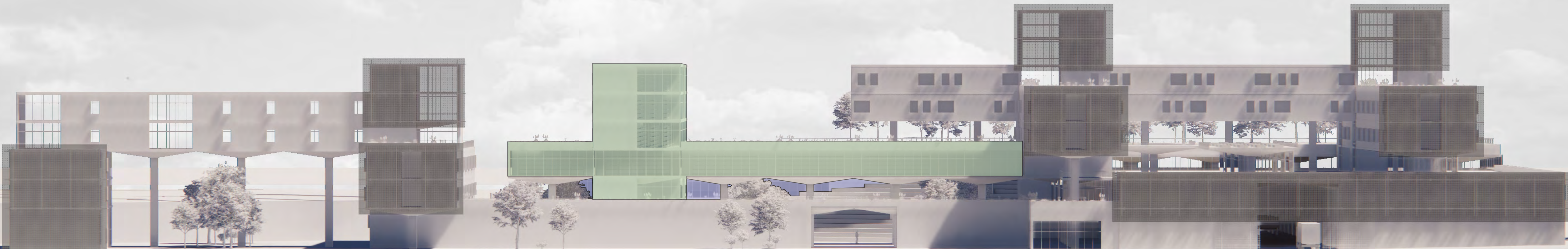
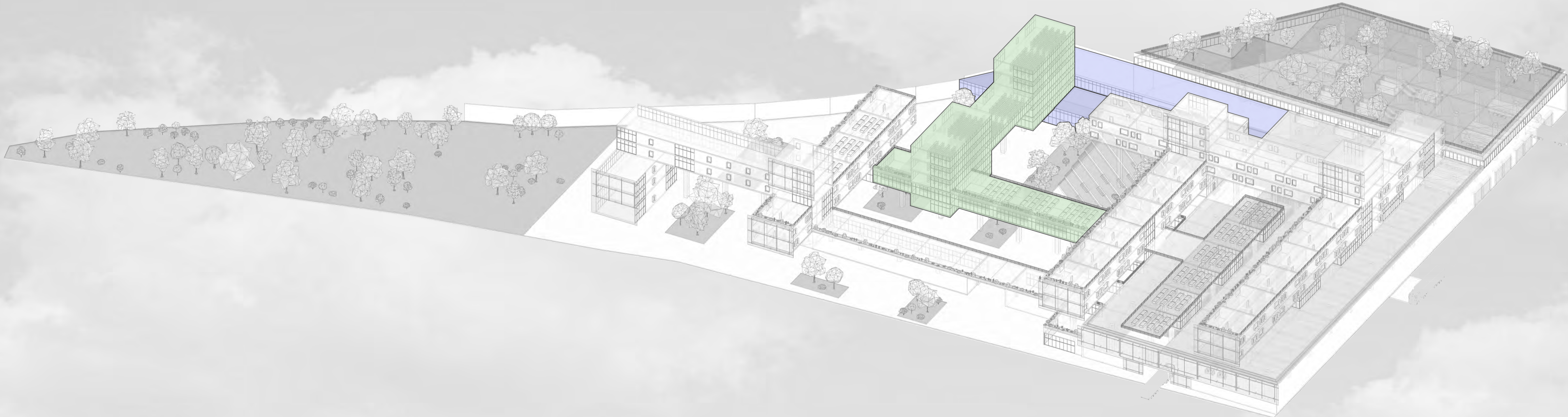
VERTICAL FARM

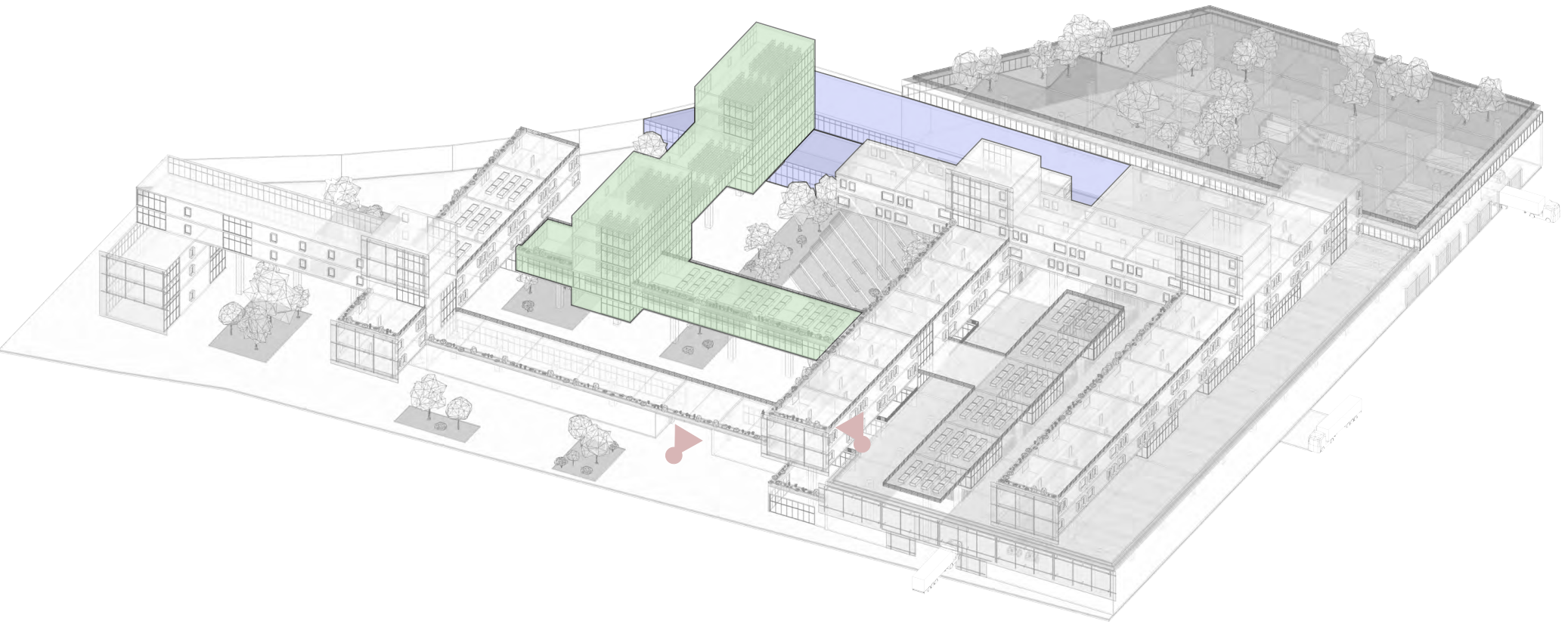
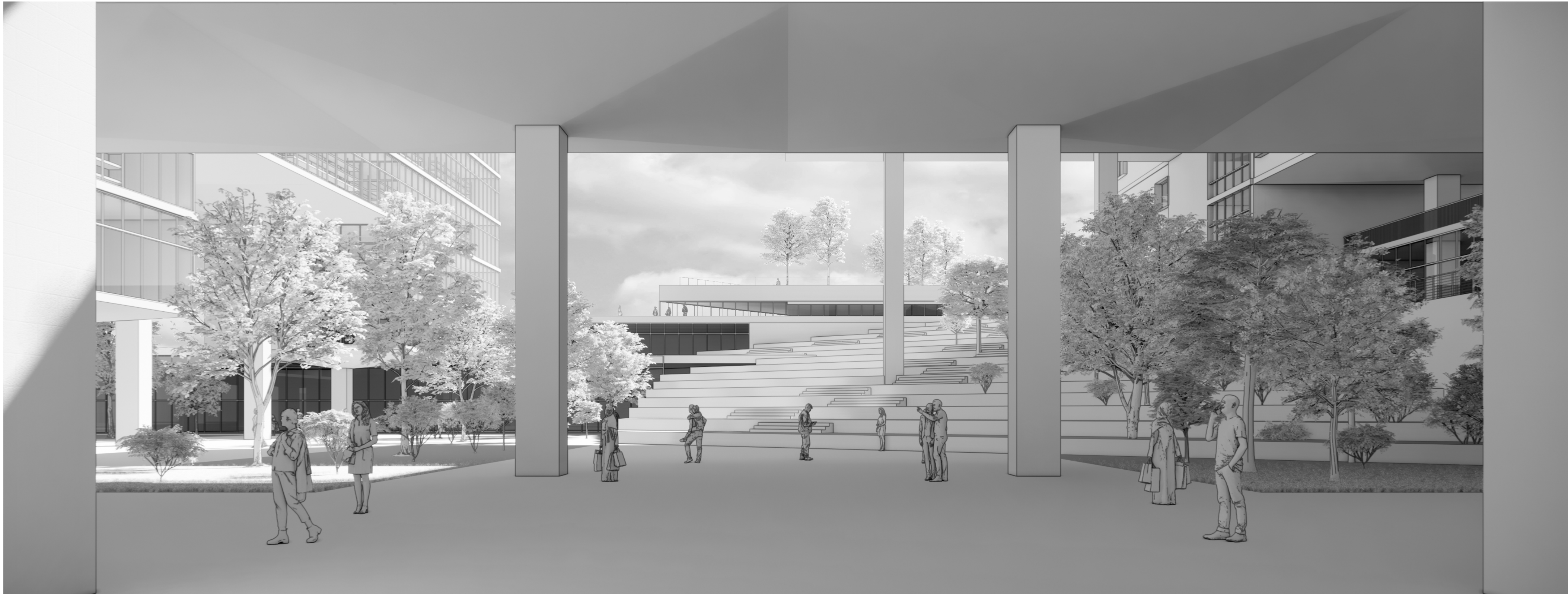
44,800 SQFT




GROCERY

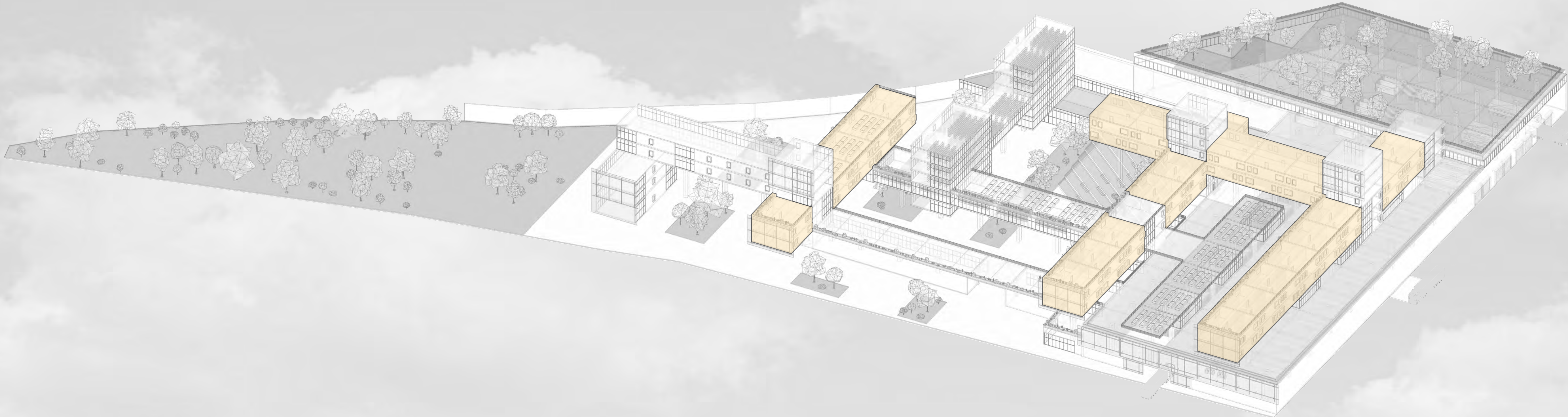
14,400 SQFT





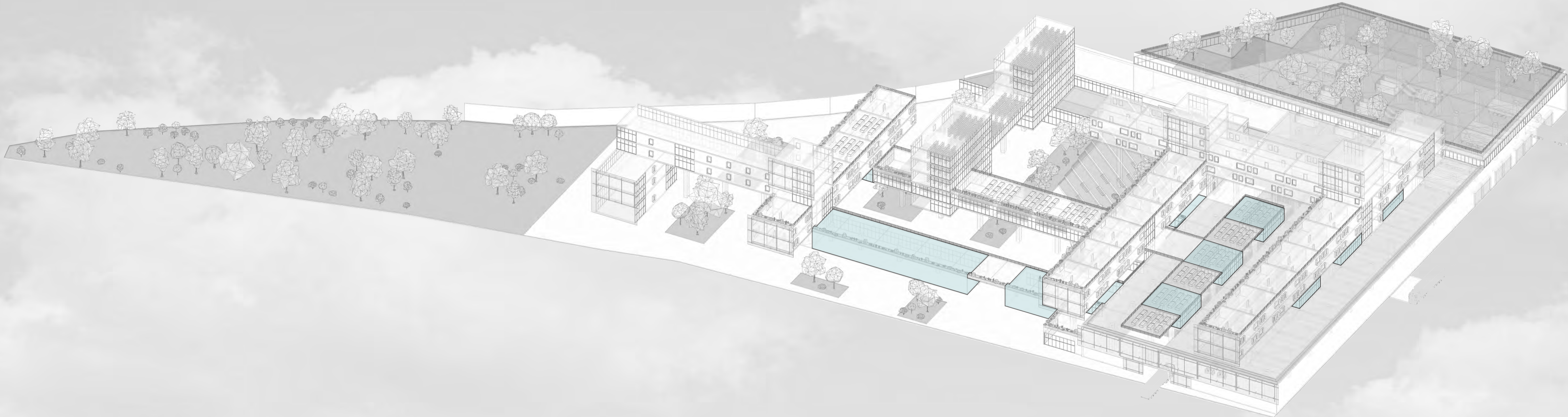
RESIDENTIAL

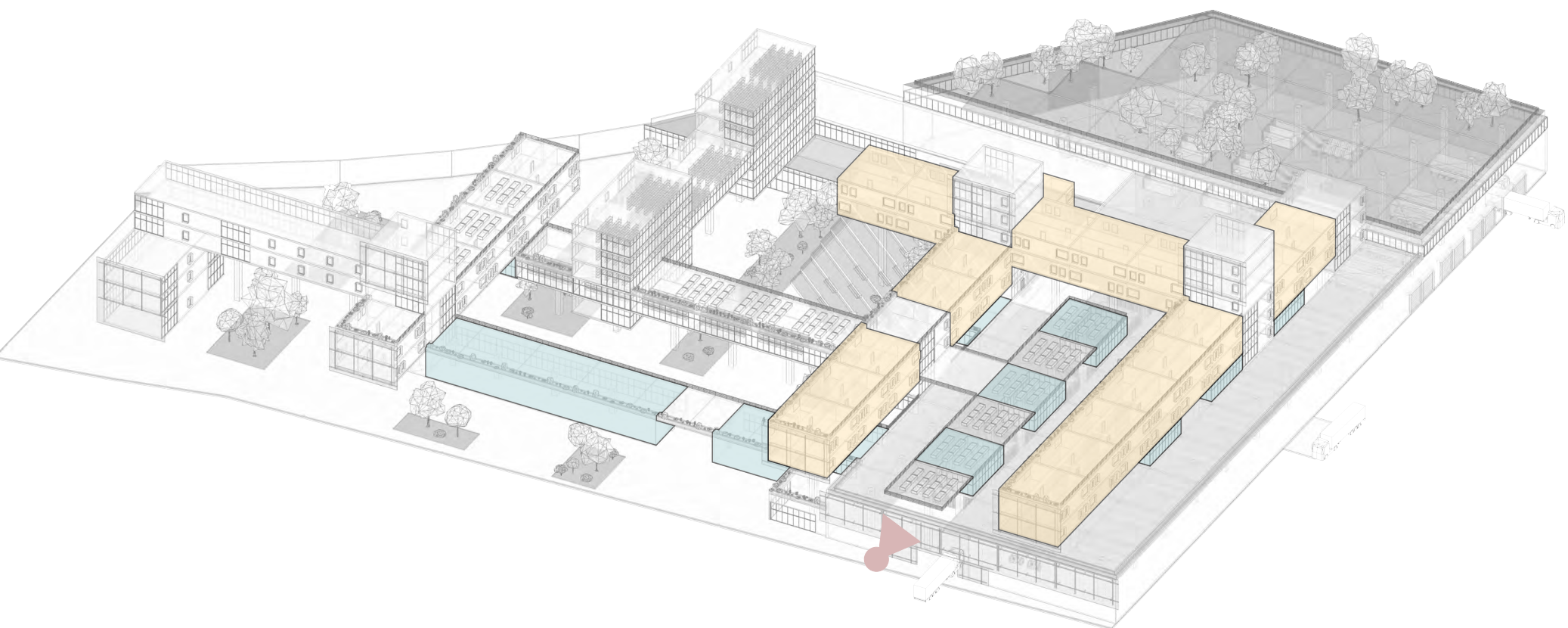
80,000 SQFT 



RETAIL / RESTAURANT

25,000 SQFT 





CO-WORK

19,200 SQFT

