

Ouroboros

Composting of bodies
reimagining how we
view funerary rituals.

Jazmyne Knox
Spring 2023





HUMAN COMPOST

Saving the environment by being turned to soil

Regarded as an environmentally-friendly alternative to burial or cremation, human composting sees bodies turned into soil in controlled conditions at an accelerated rate.

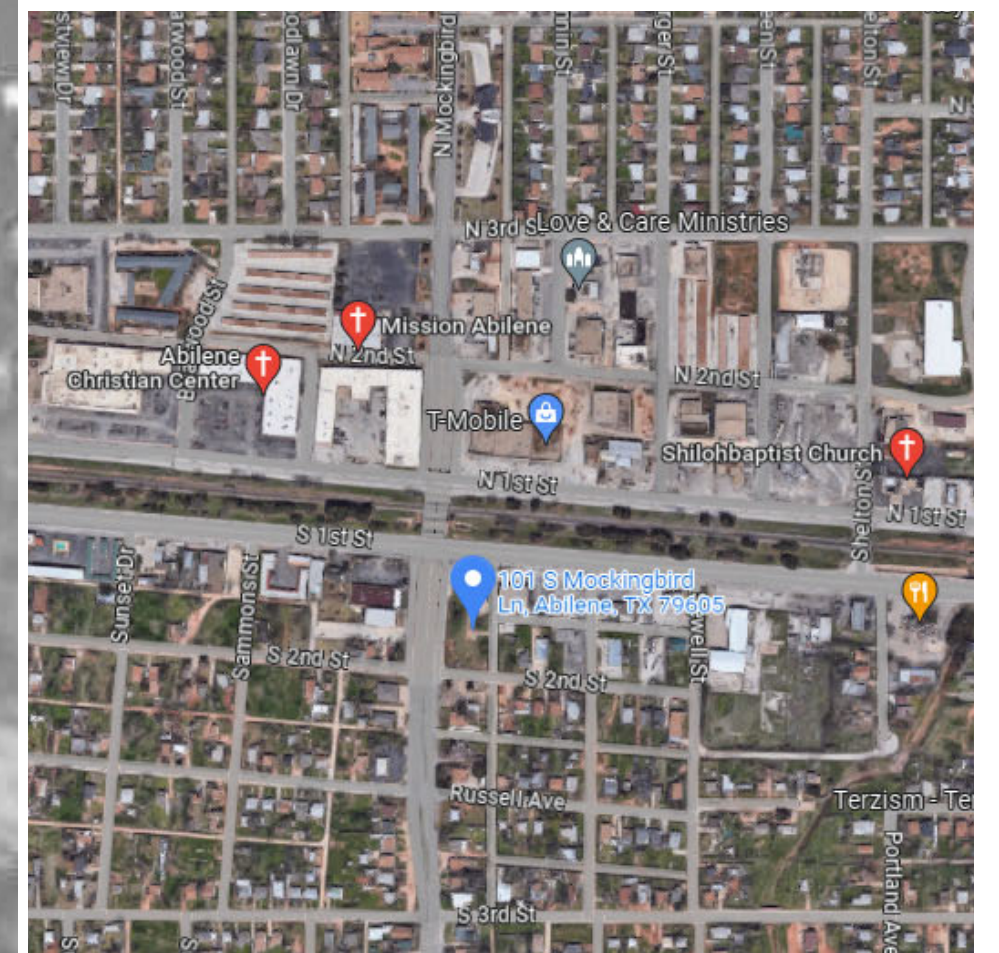
The process involves surrounding a body with wood chips, alfalfa and straw in a container where microbes will naturally break the body down. Bones, which take a much longer time to dissolve, are later pulverised and combined with the rest of the soil. The entire process, from placing the body into the vessel to finished soil, takes between six to eight weeks.

Once the body has been turned into soil, it can be used however the deceased person's loved ones choose – from enriching a garden, to being spread across multiple locations.

How will this change the landscape of mourning our loved ones?

The Site

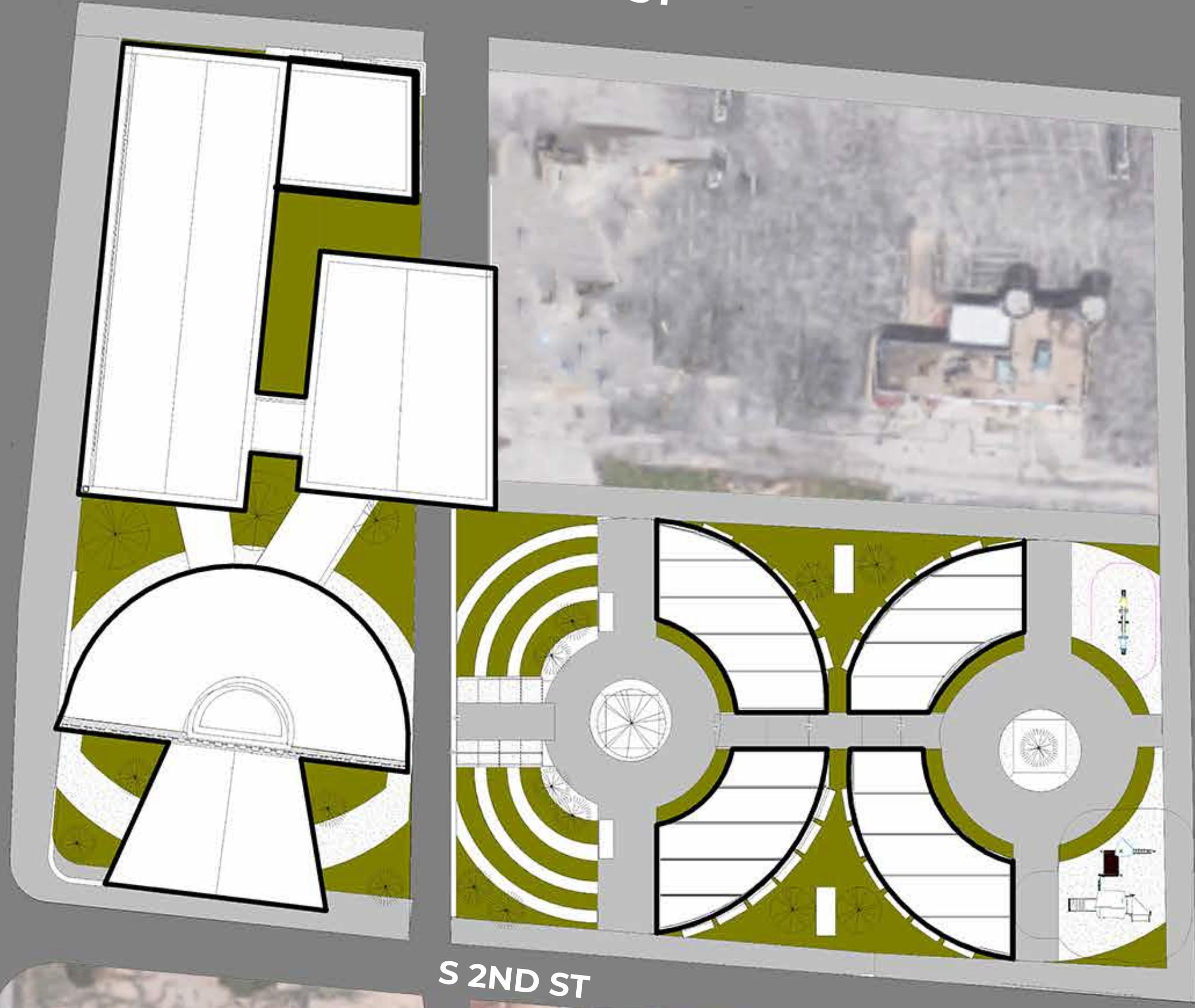
101 S MOCKINGBIRD LANE
ABILENE, TX
RESIDENTIAL AREA CLOSE TO
CHURCHES



WELLNESS
CENTER

S MOCKINGBIRD LN

S 1ST ST

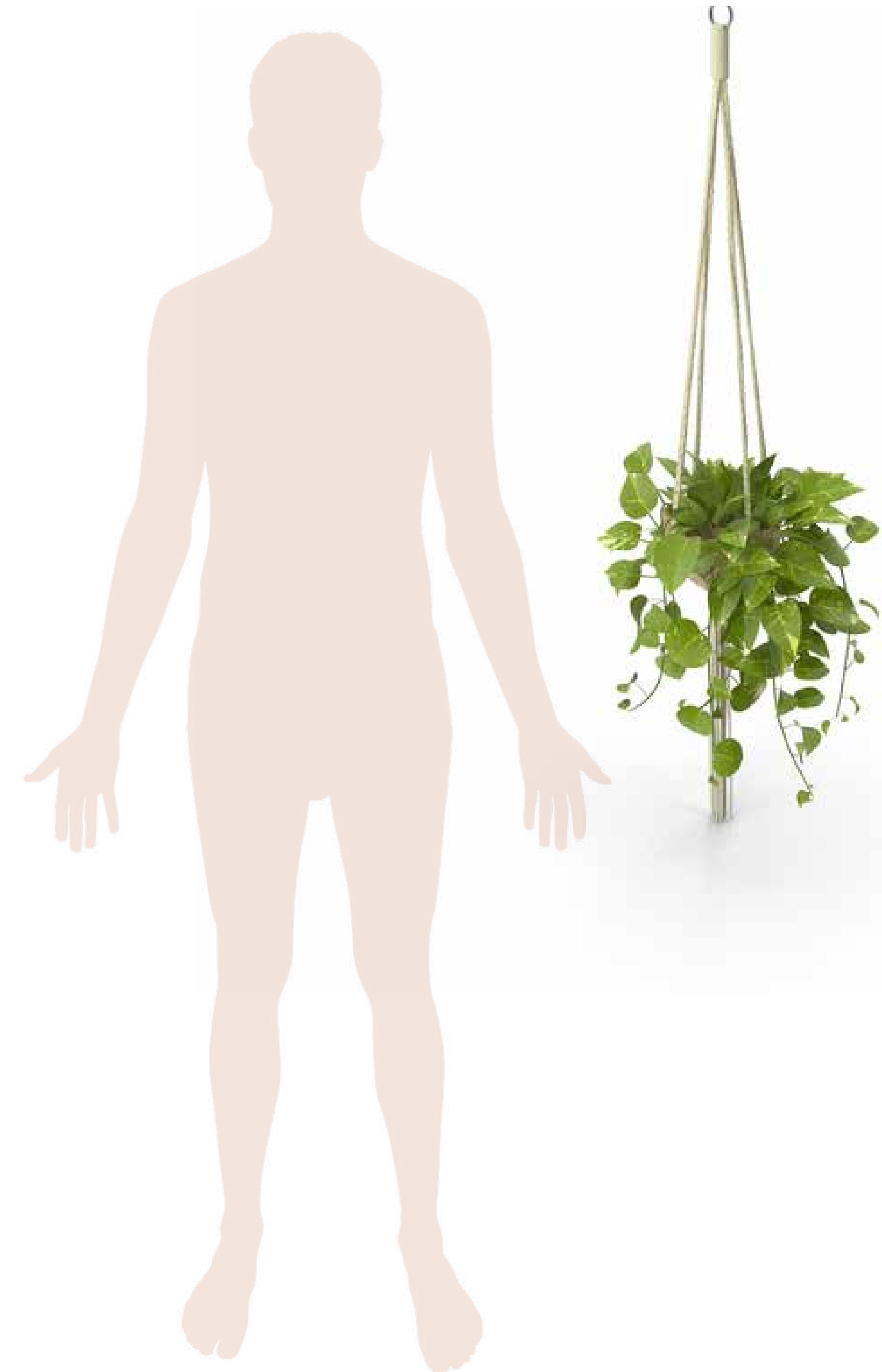


S 2ND ST

SITE PLAN

3/16" = 1'

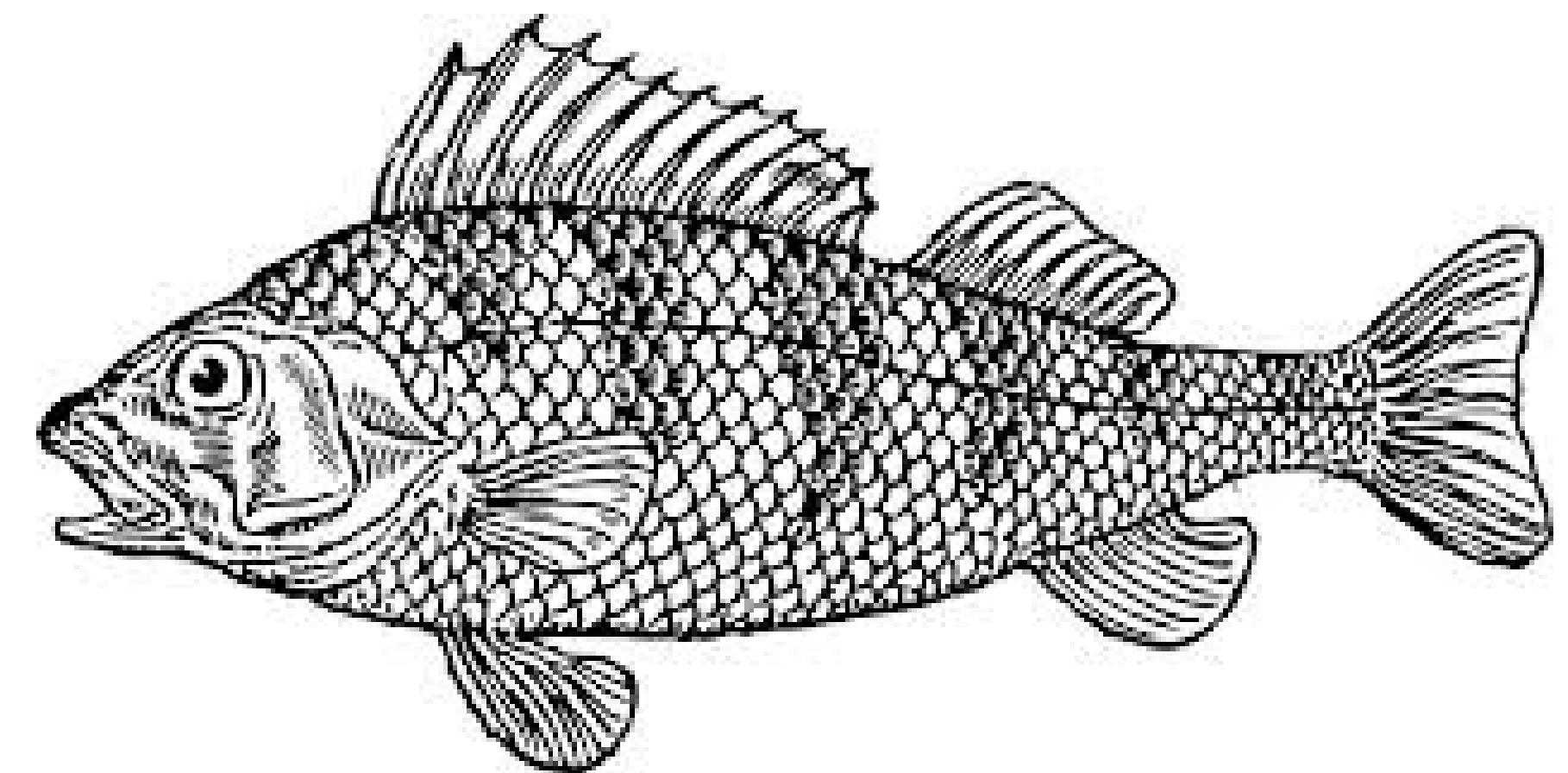
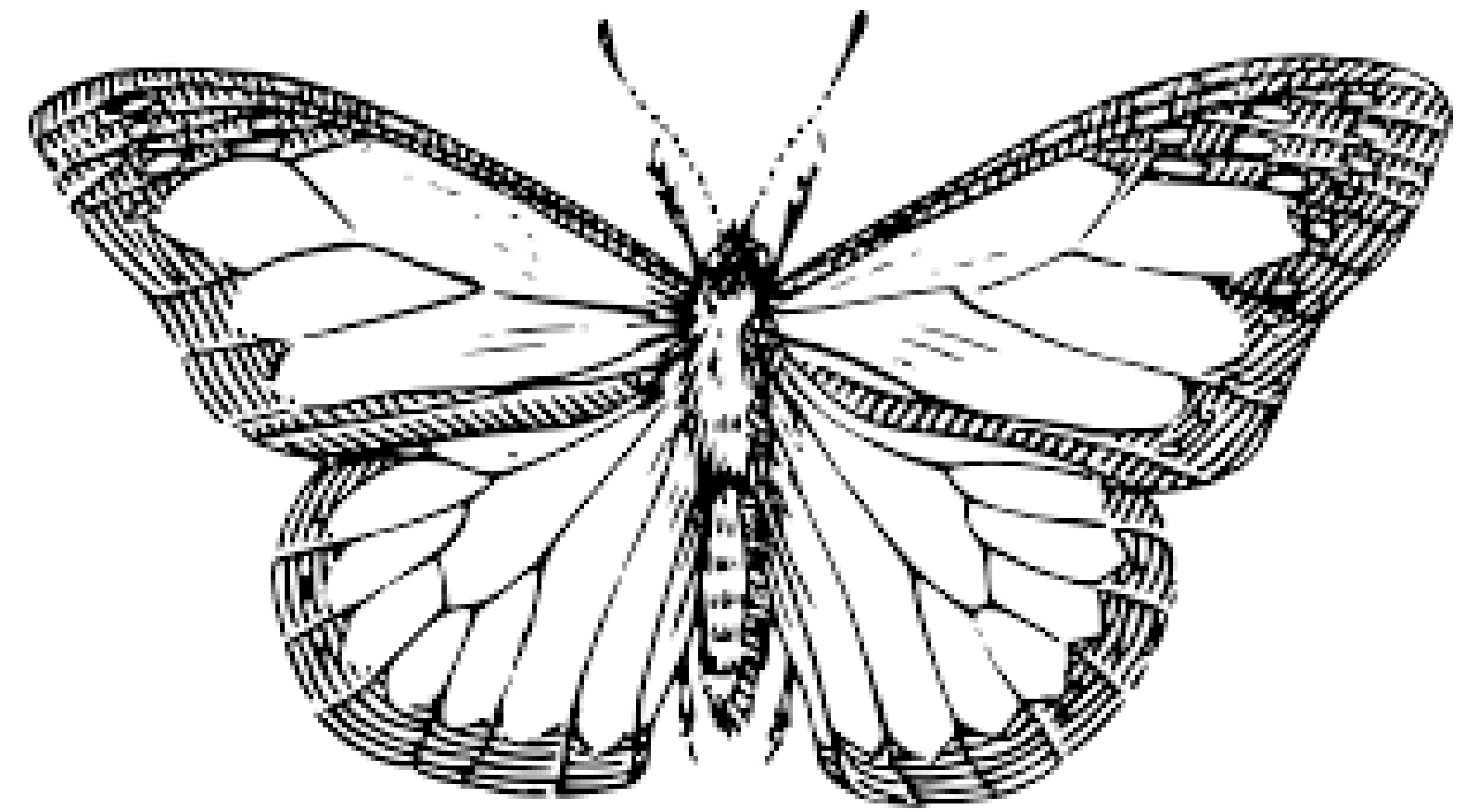




CYCLES

"...absolutely nothing dies without being carefully wrapped in earth, to be deconstructed and cleaned and used to feed life again. Nothing is wasted, nothing is discarded, everything is workable and has a place."

Adreanna Limbach

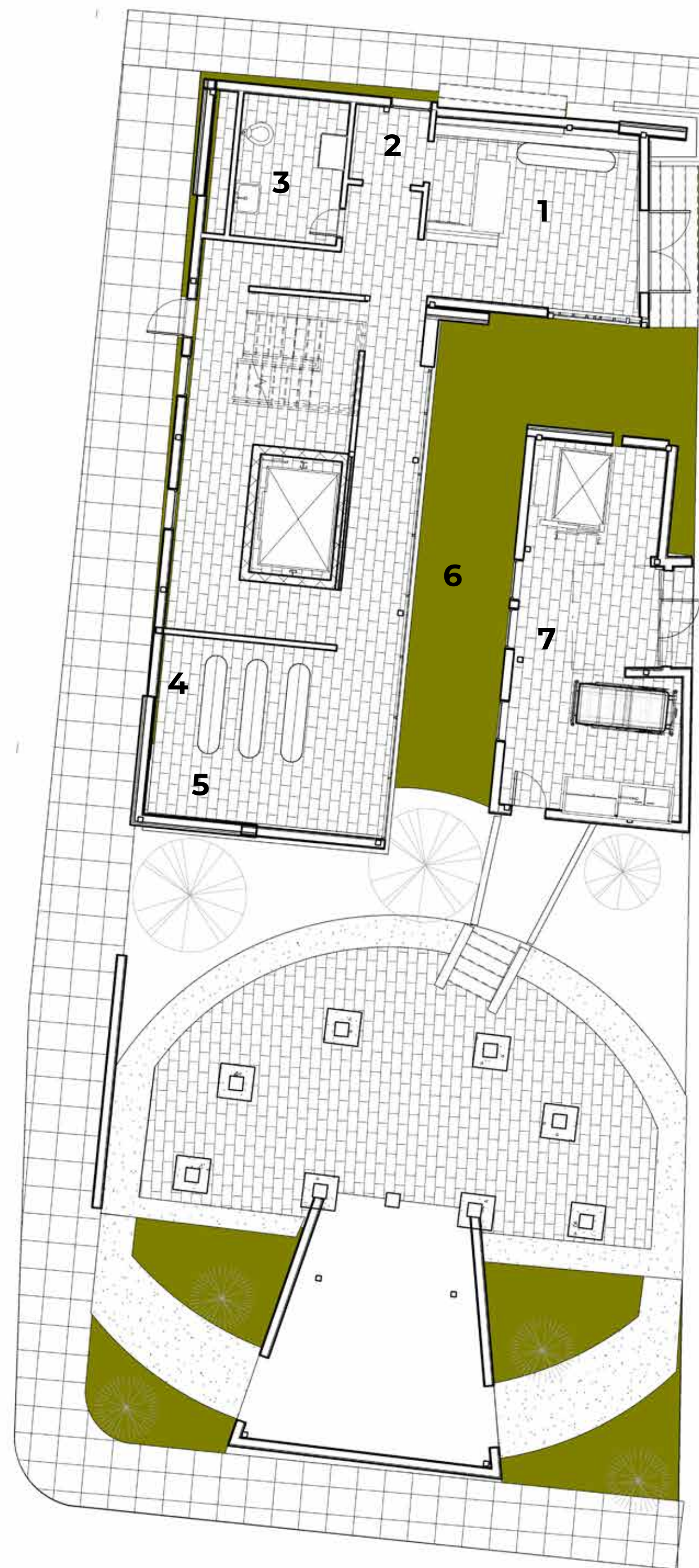


ARRIVAL



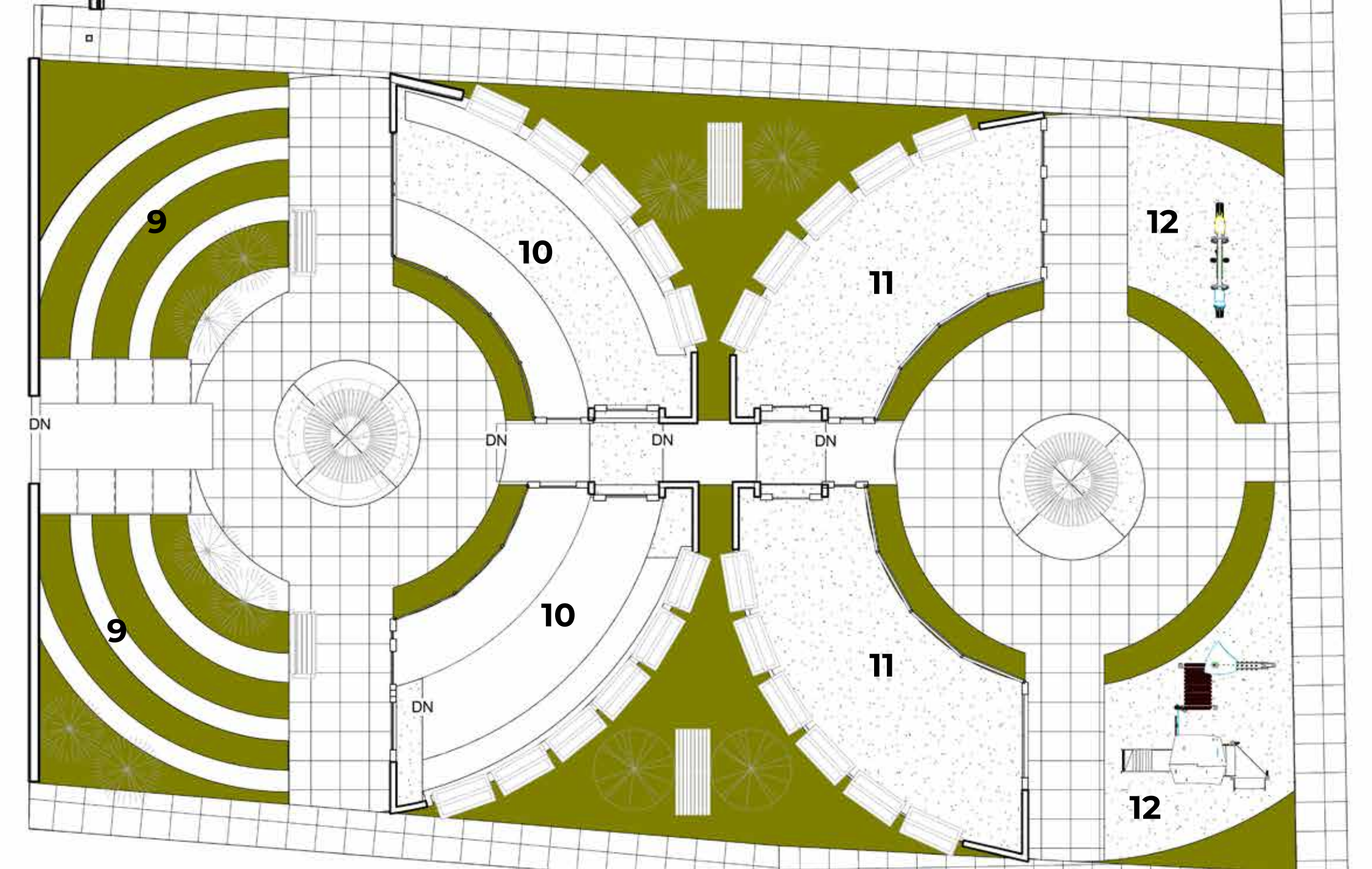
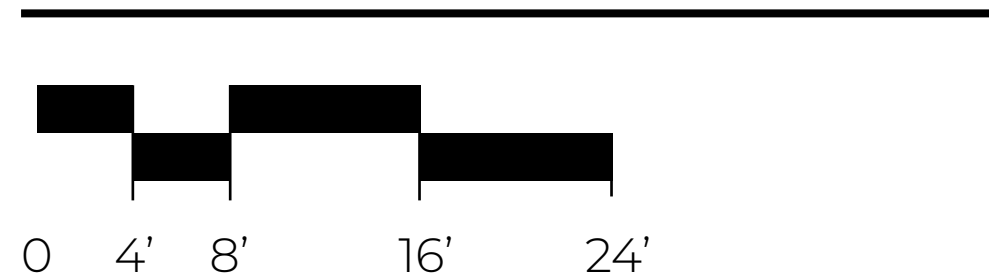
LEGEND

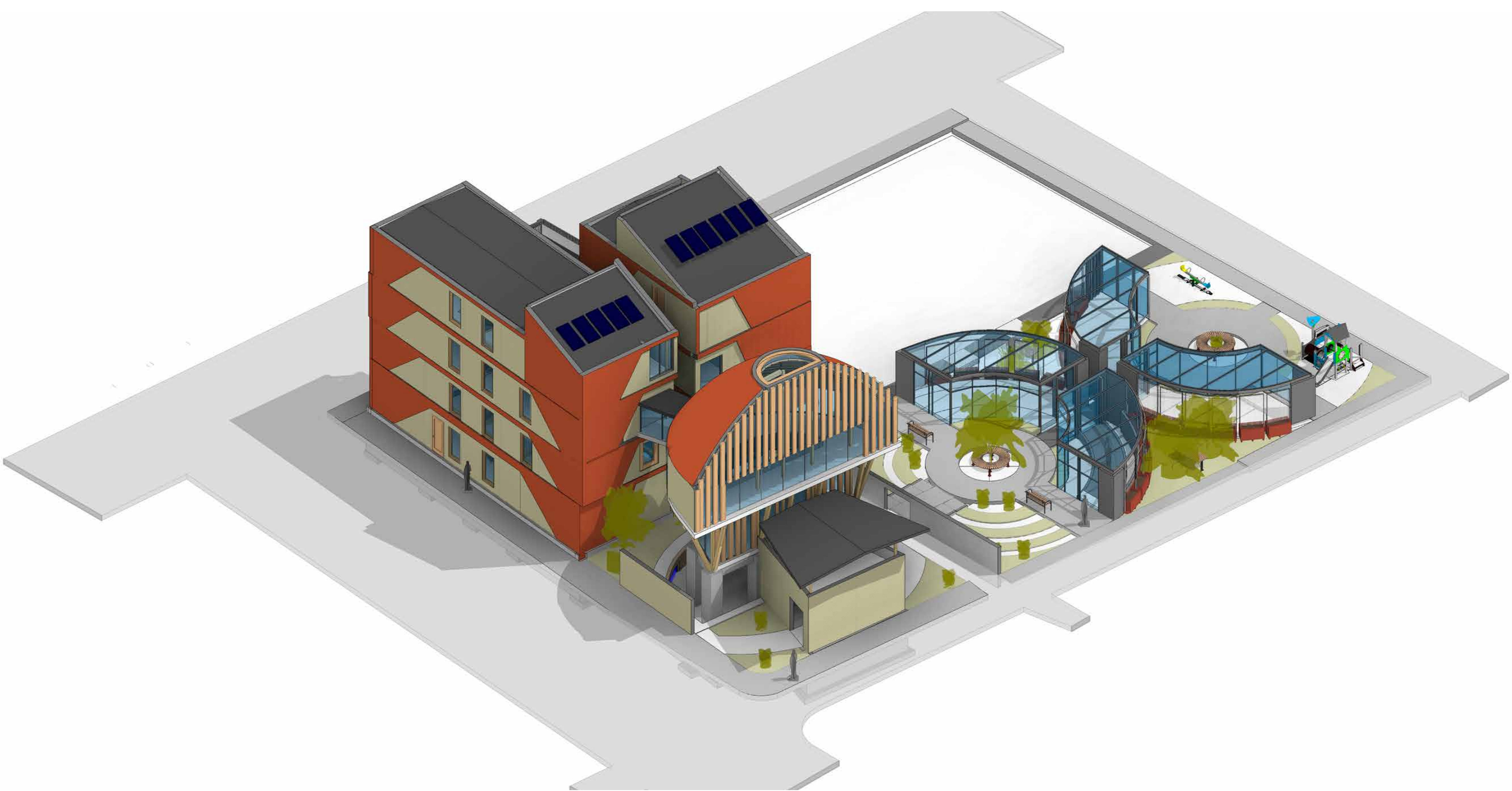
- 1 LOBBY
- 2 FLOWER ROOM
- 3 RESTROOM
- 4 CHAPEL
- 5 MECHANICAL
- 6 GARDEN OF REFLECTION
- 7 COLD ROOM/PREP ROOM
- 8 LOADING DOCK/BODY DROP-OFF
- 9 GARDEN OF REMEMBRANCE
- 10 AQUAPONICS CONSERVATORY
- 11 BUTTERFLY CONSERVATORY
- 12 PLAYGROUND
- 13 PARKING



8

FLOOR PLAN 1



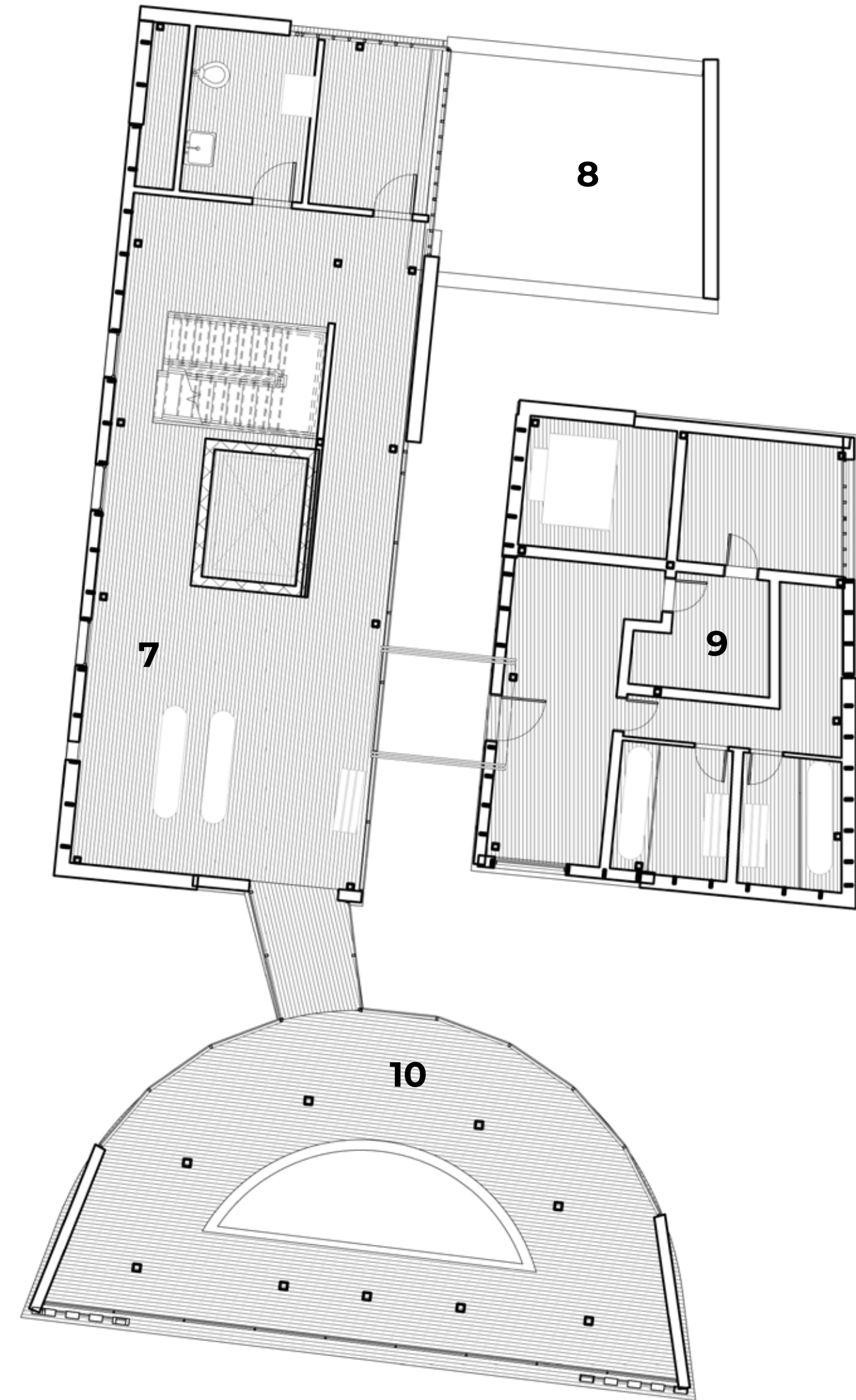
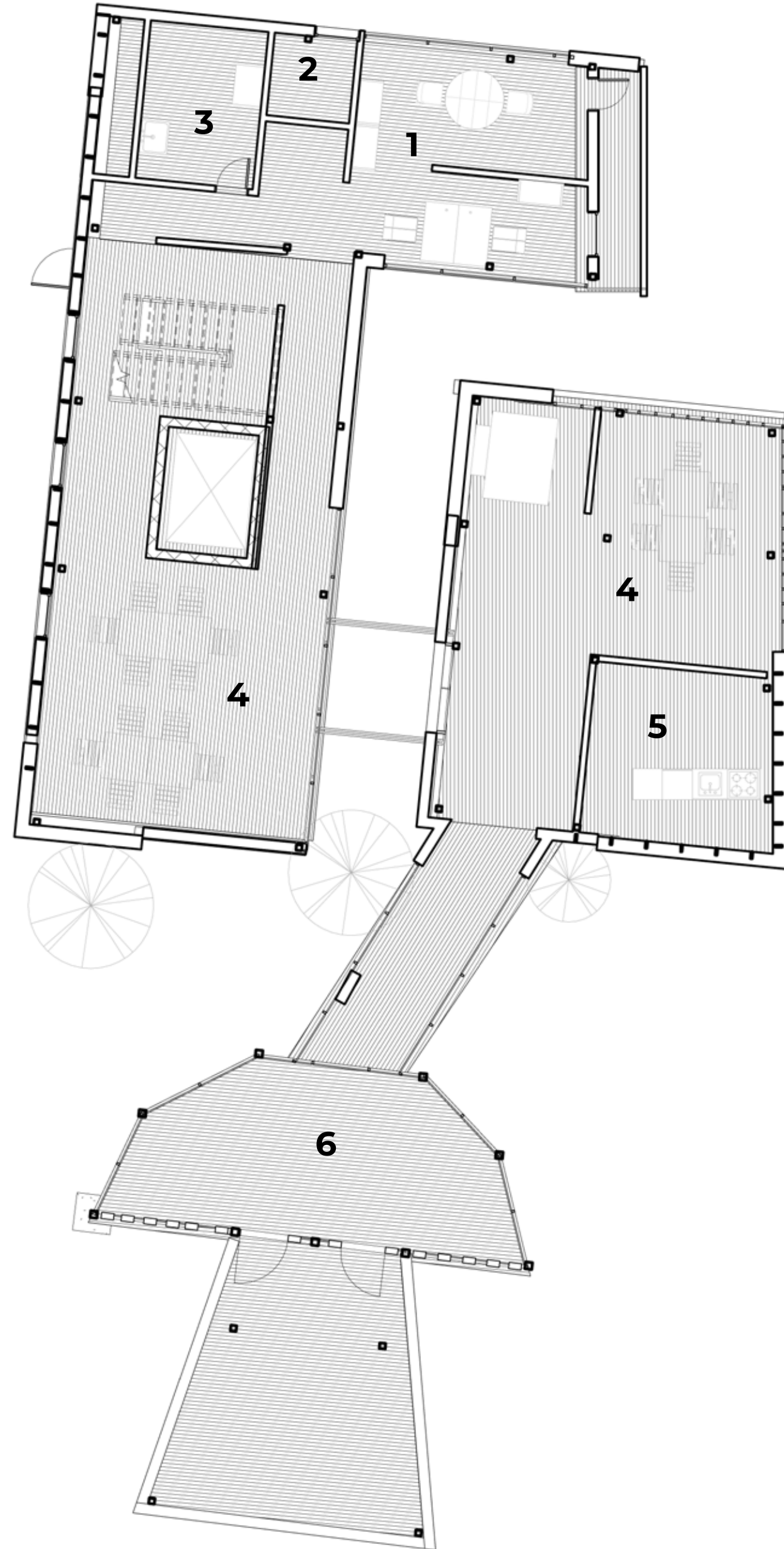


PROCESSION

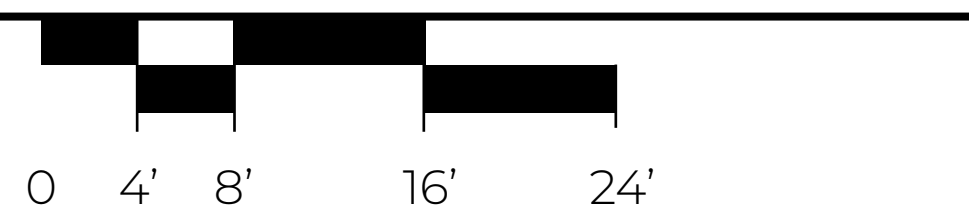


LEGEND

- 1 OFFICE SPACE
- 2 MECHANICAL
- 3 RESTROOM
- 4 GATHERING SPACE
- 5 KITCHEN
- 6 CEREMONIAL SPACE
- 7 MOURNING SPACE
- 8 GREEN ROOF
- 9 PRIVATE BODY MOURNING ROOMS
- 10 AMBULATORY

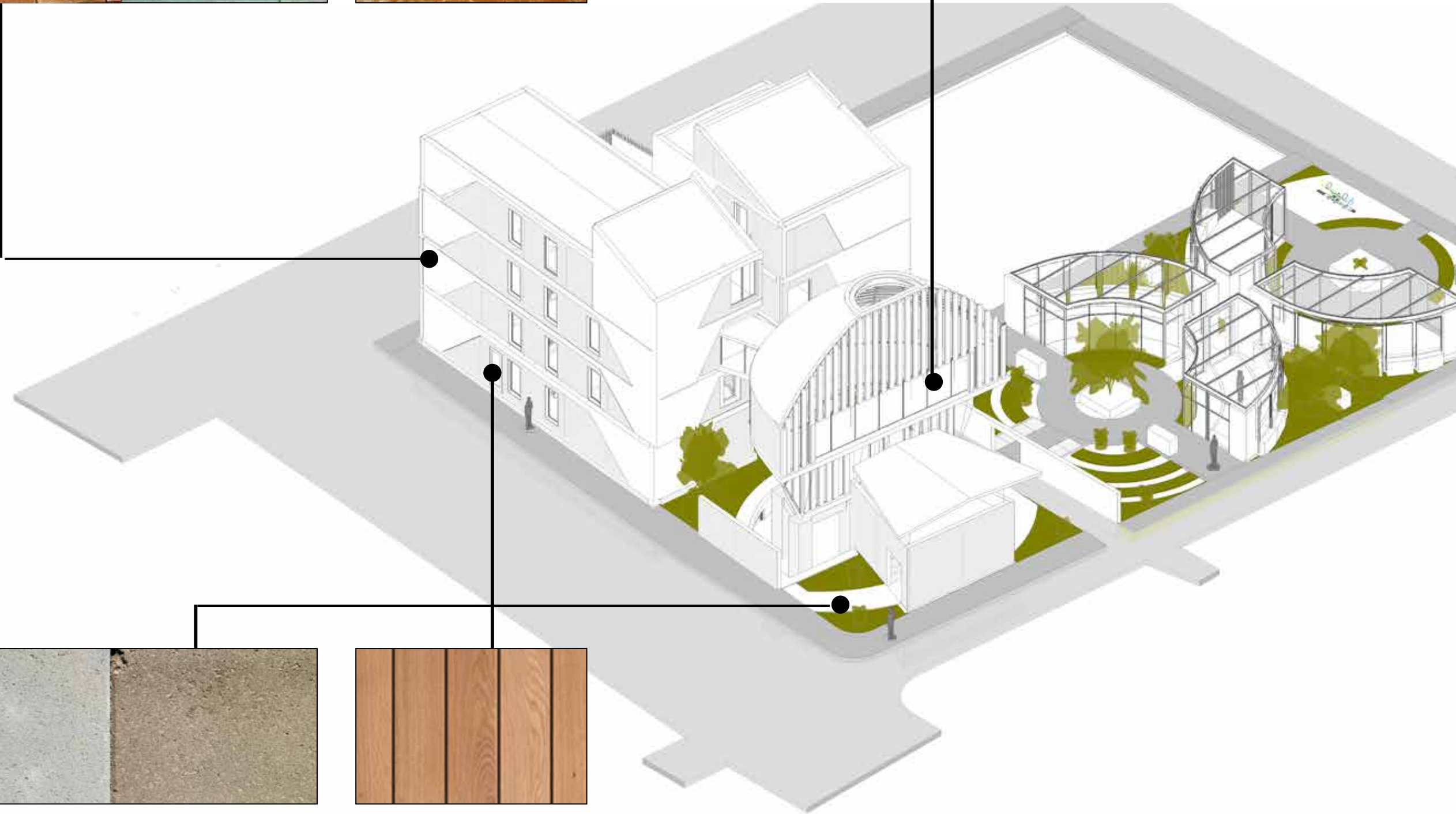
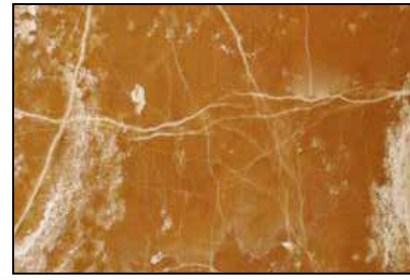
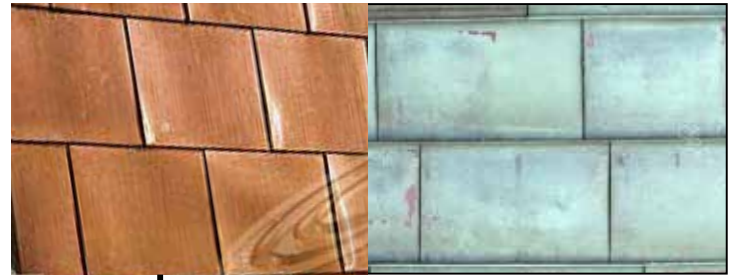


FLOOR PLAN 2 AND 3



IN-BETWEEN (COPPER PANELS)

HEAVEN (AMBER ONYX)



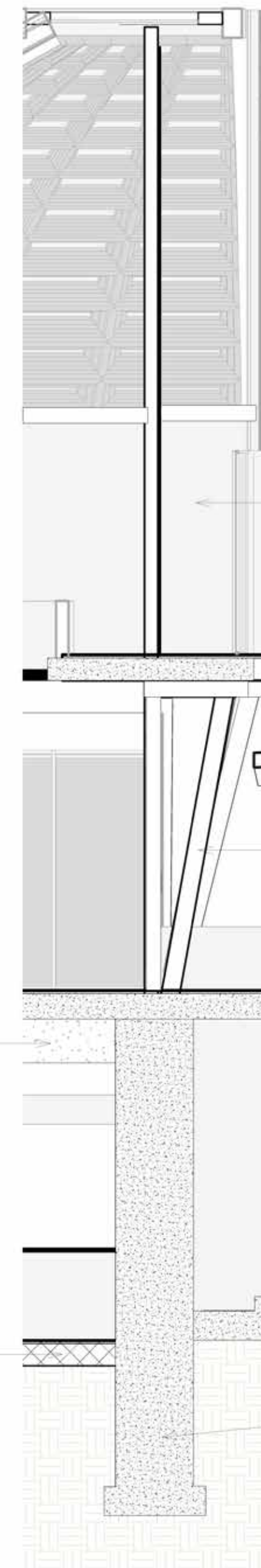
UNDERWORLD (CONCRETE/STONE)

LIFE ON EARTH (WOOD PANELS)

MATERIALITY DIAGRAM

CONCRETE BEAM

CONCRETE FLOOR



AMBER ONYX

WOOD FRAME

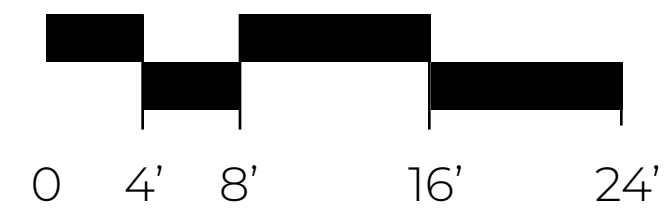
CONCRETE FOOTING

WALL SECTION

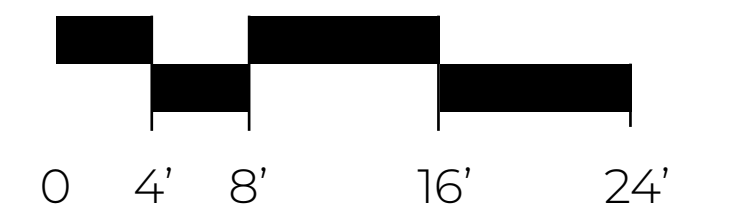
RITUAL ASCENT

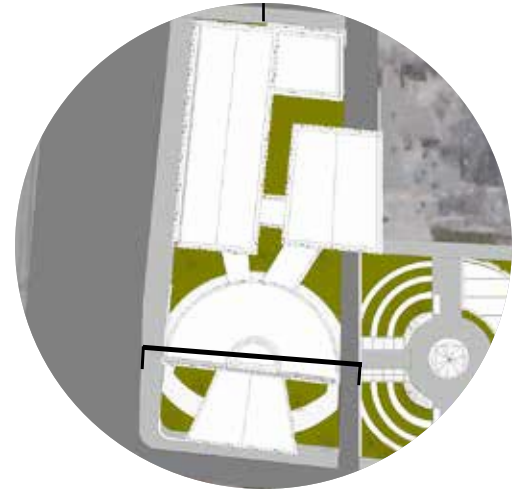


NORTH ELEVATION

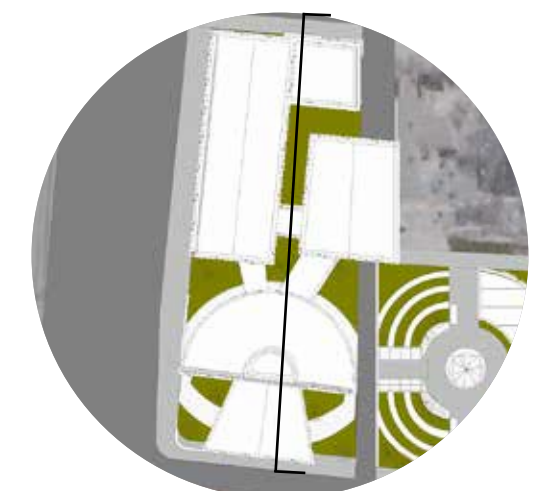
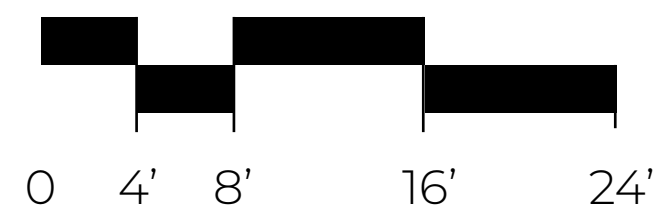


SOUTH ELEVATION

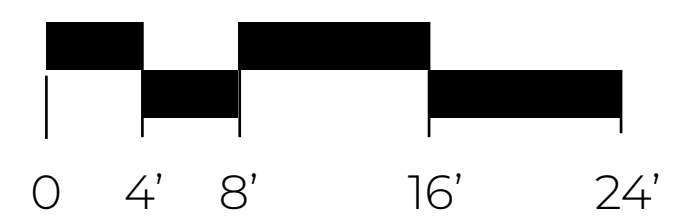


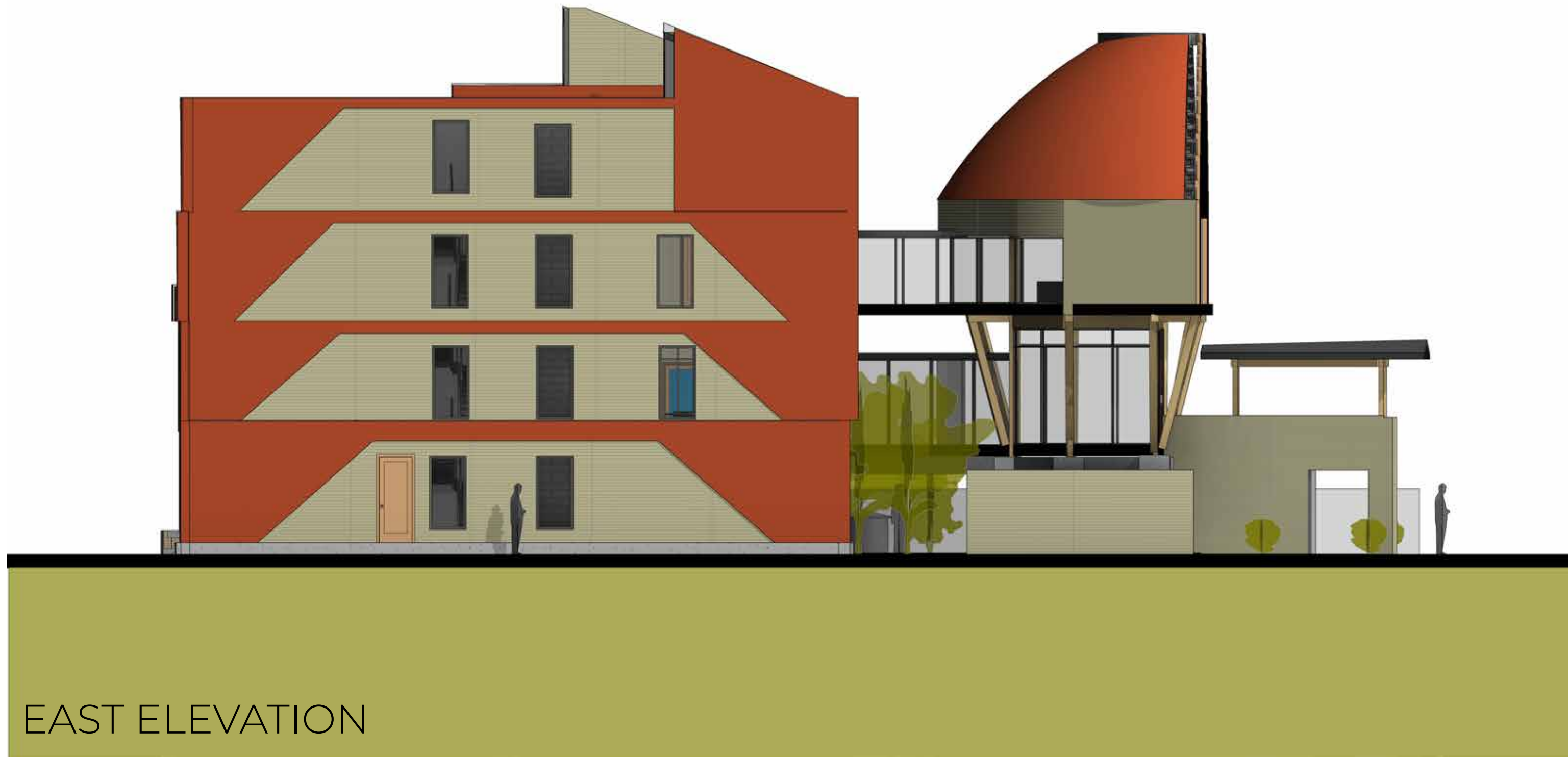


SECTION 1

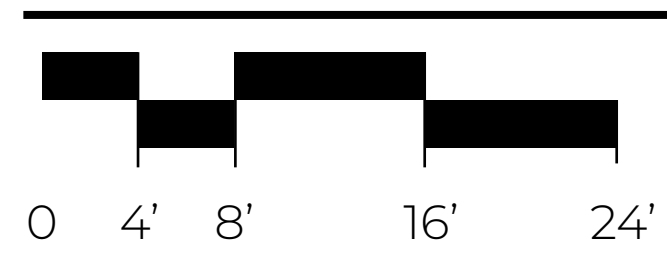
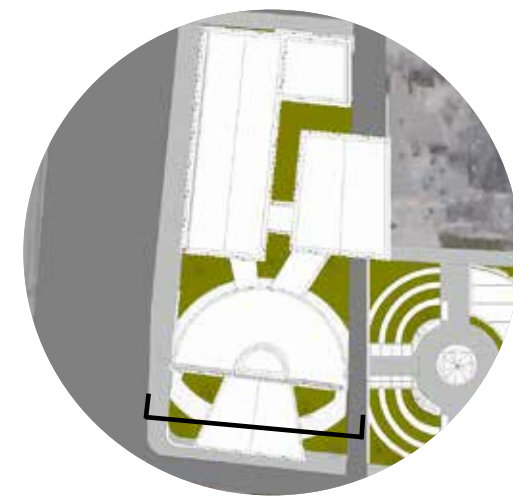


SECTION 2





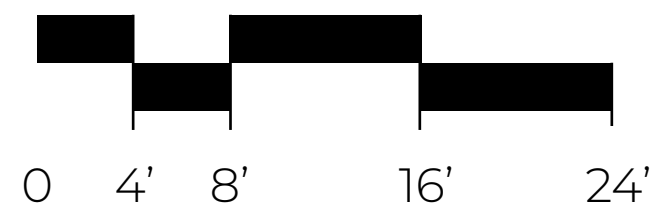
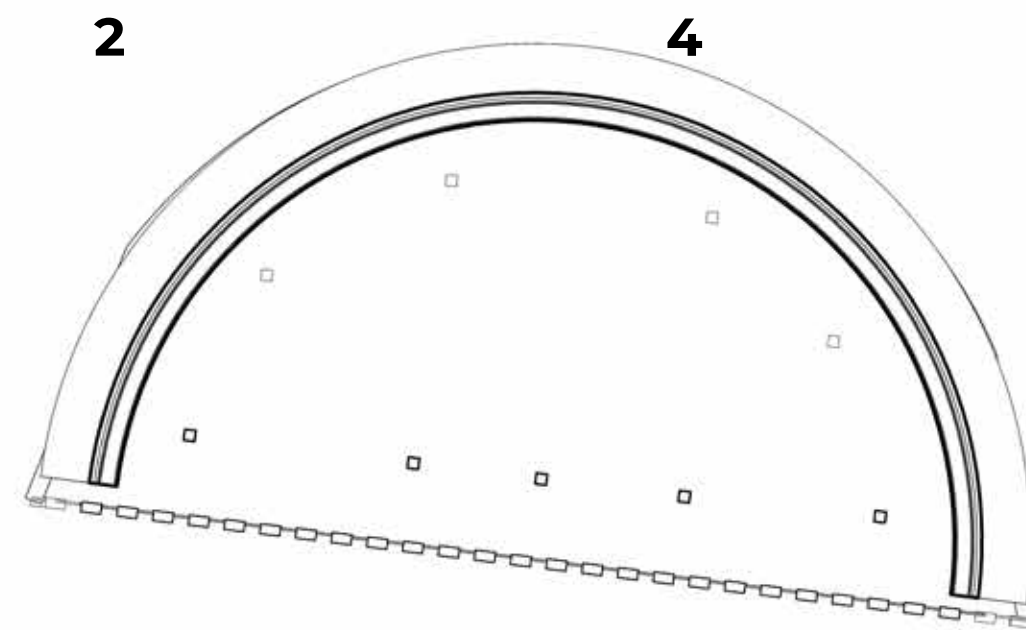
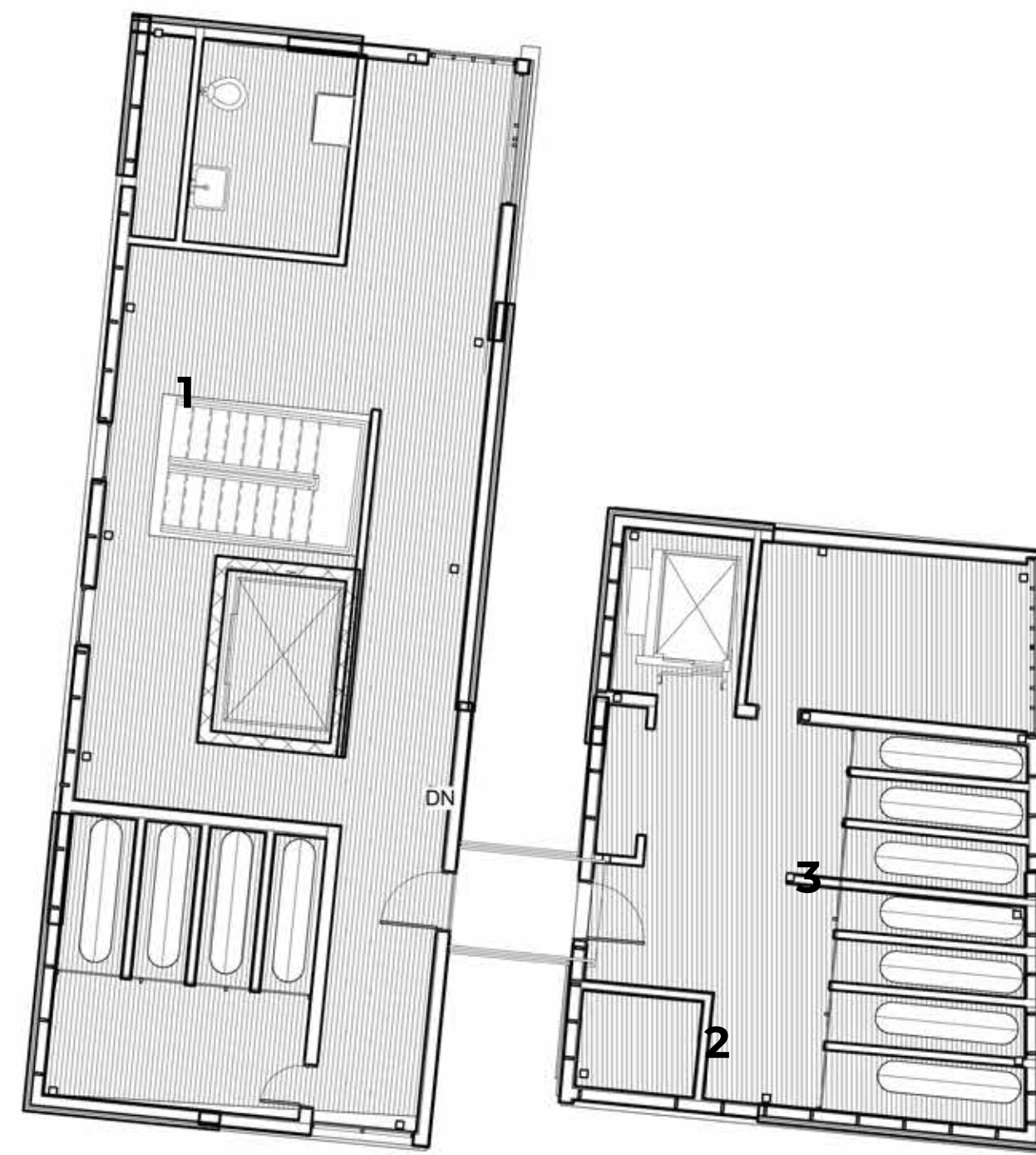
EAST ELEVATION



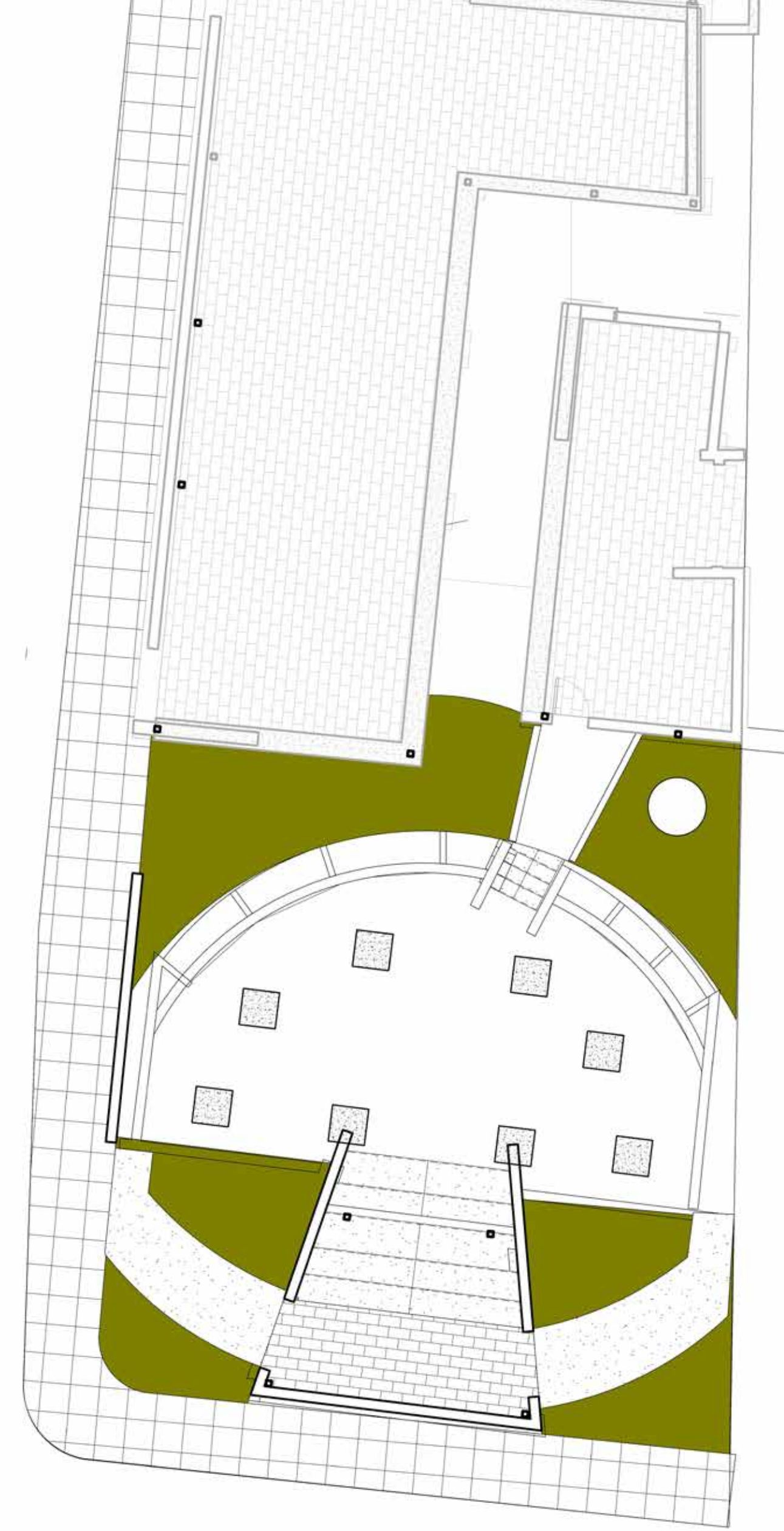
SECTION A

LEGEND

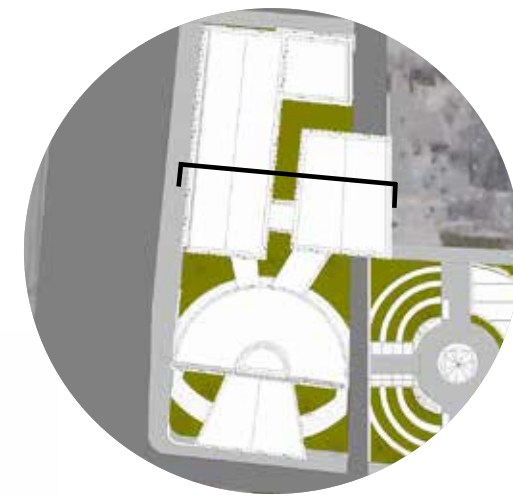
- 1 RESTROOM
- 2 BODY VESSEL STORAGE
- 3 TESTING LAB
- 4 MECHANICAL
- 5 SOIL STORAGE FOR FINAL FUNNERAL



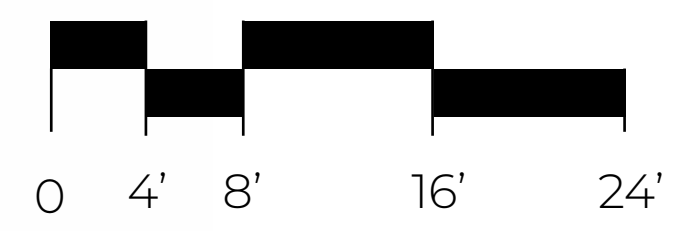
FLOOR PLAN 4



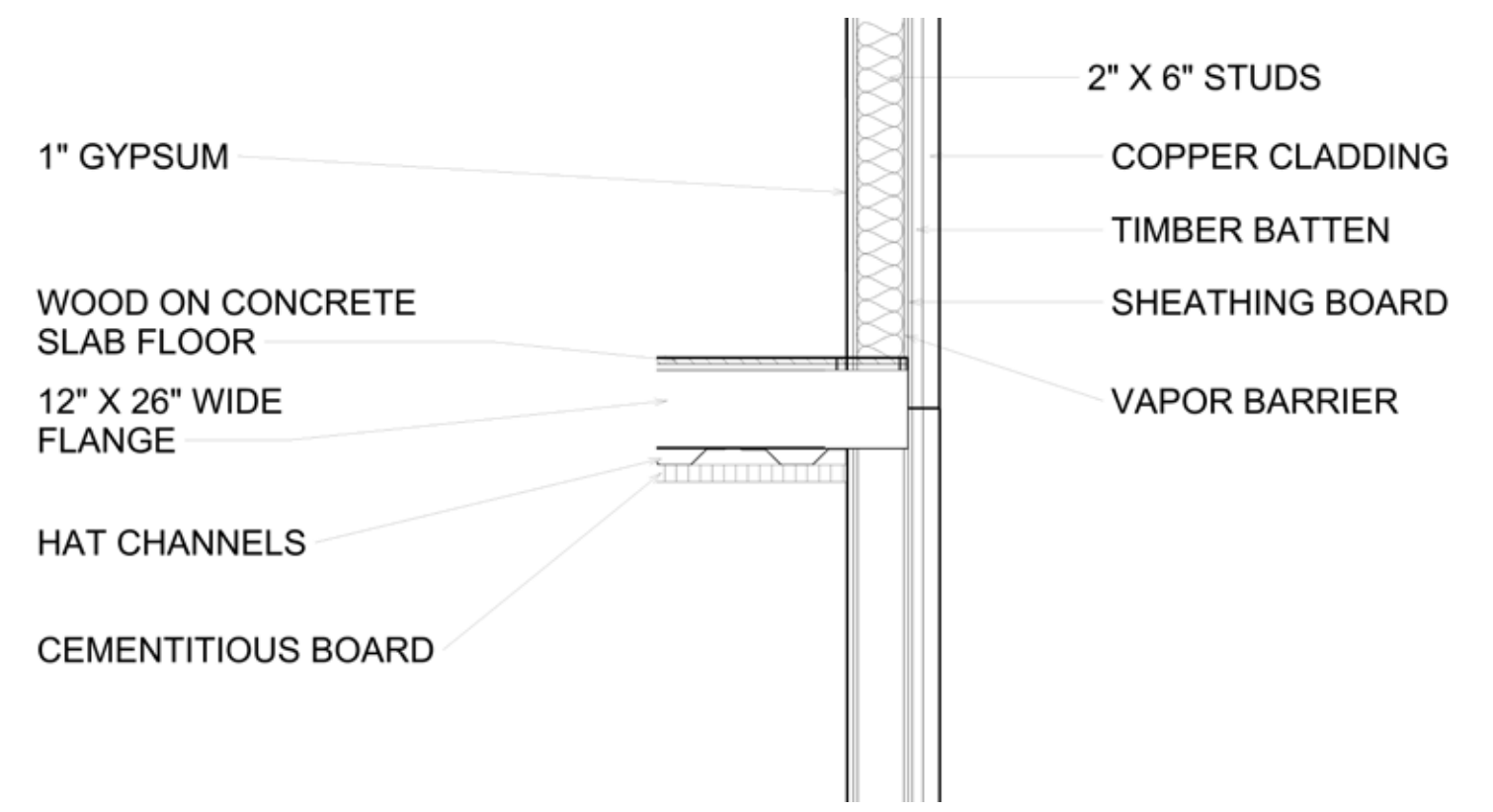
FLOORPLAN UNDERGROUND



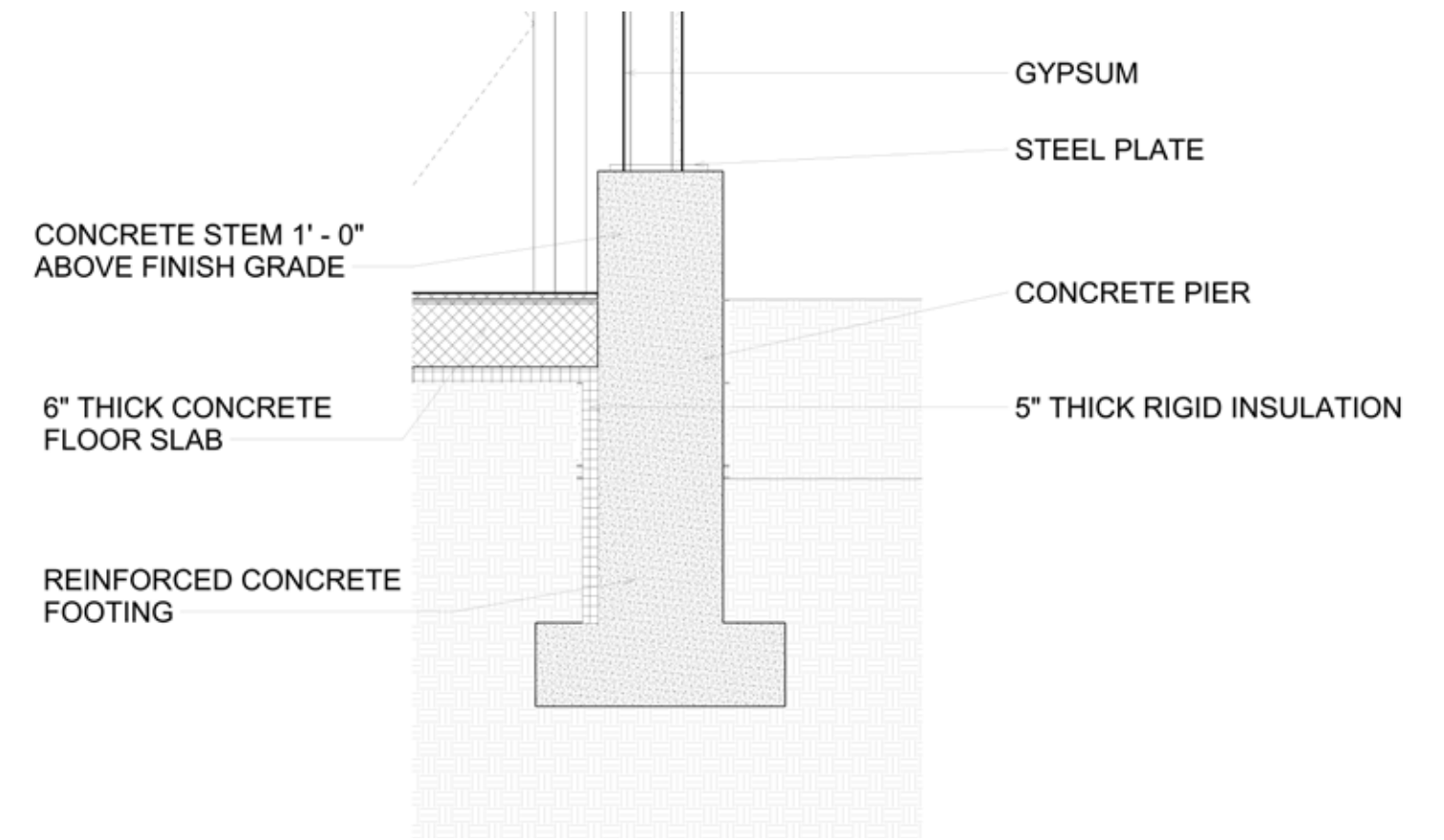
SECTION A

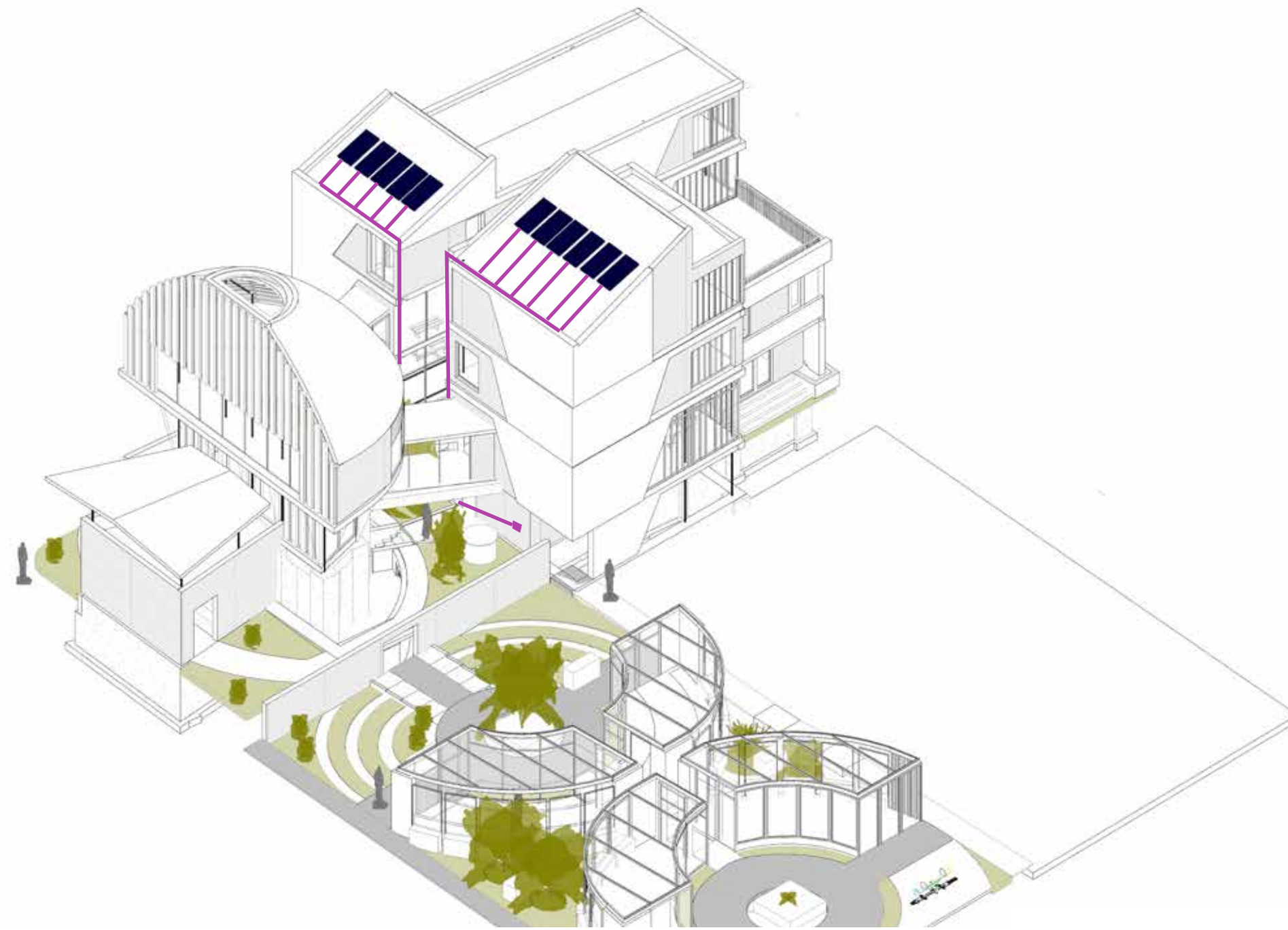


WALL DETAIL

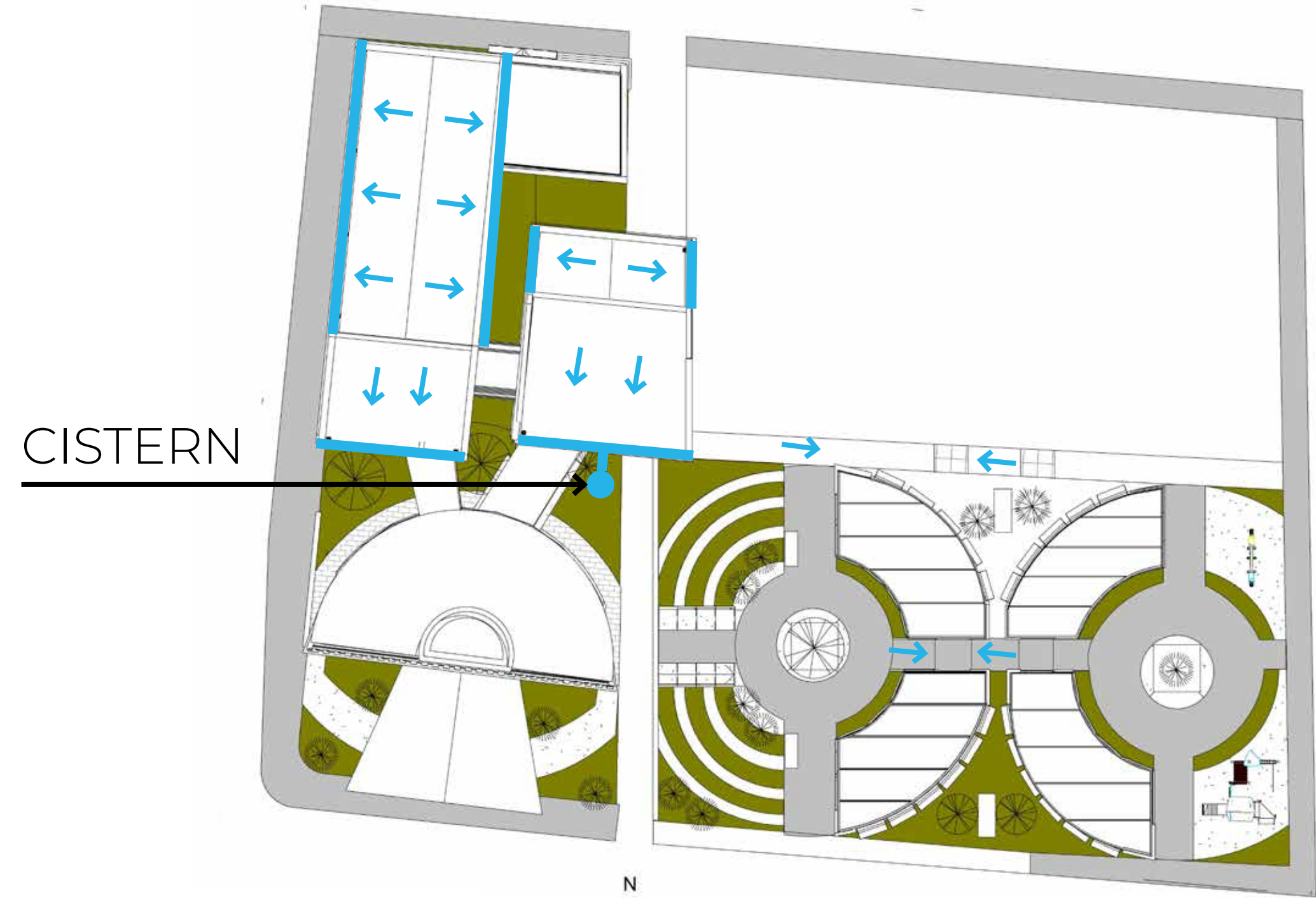


FOUNDATION DETAIL

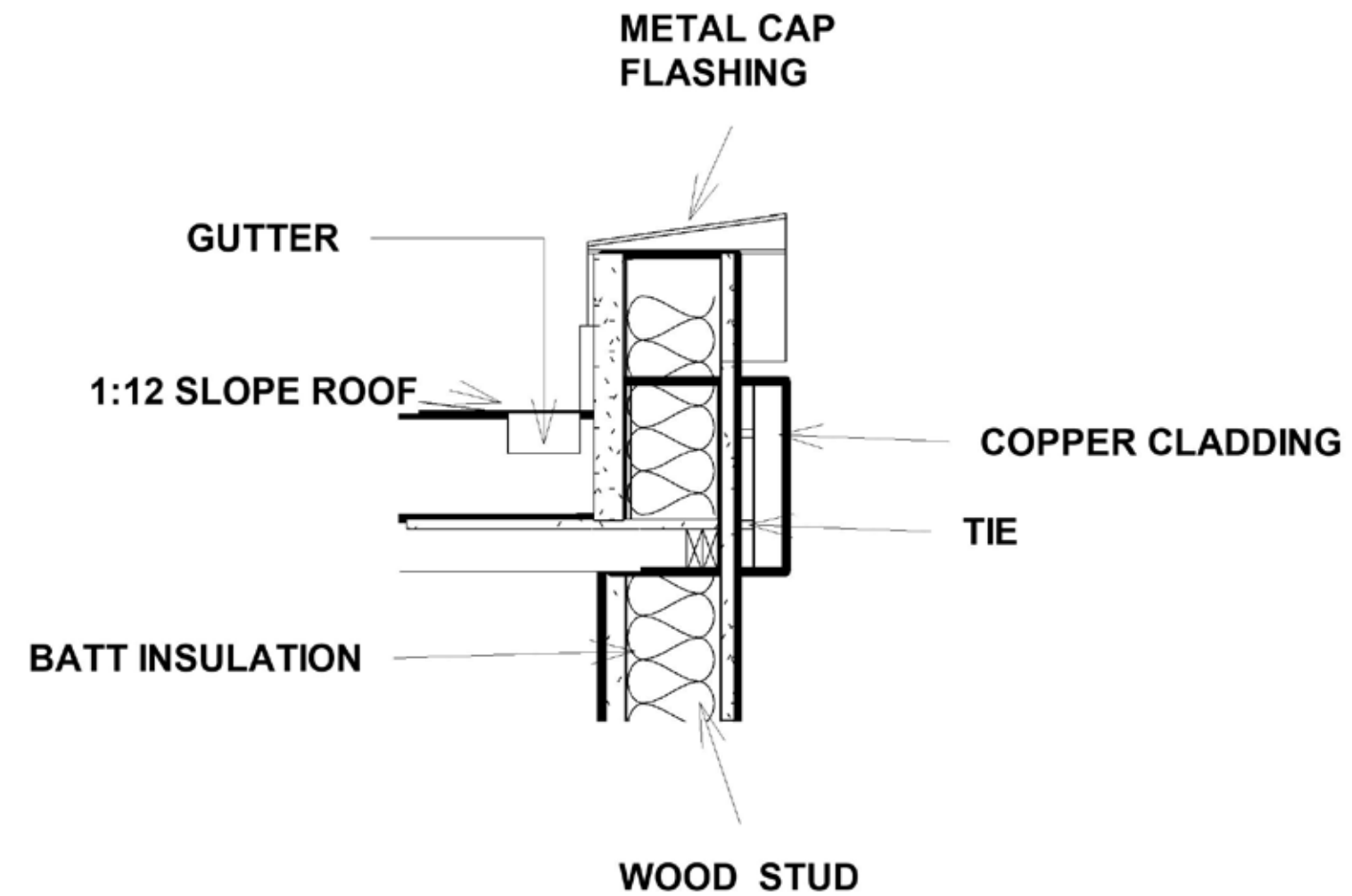




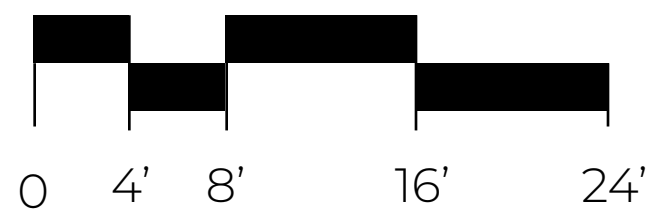
SOLAR PANEL DIAGRAM



DRAINAGE DIAGRAM



GUTTER DETAIL



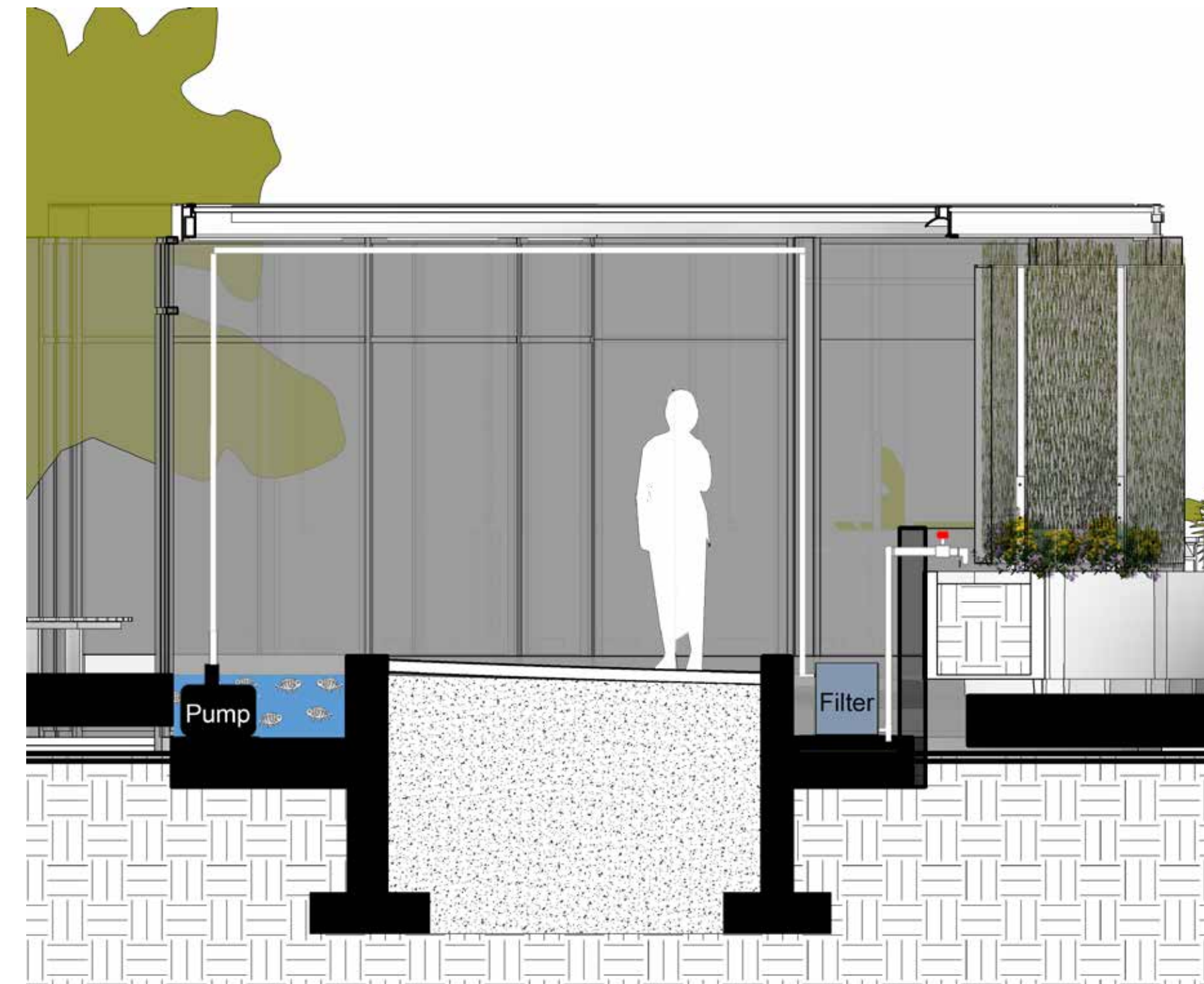
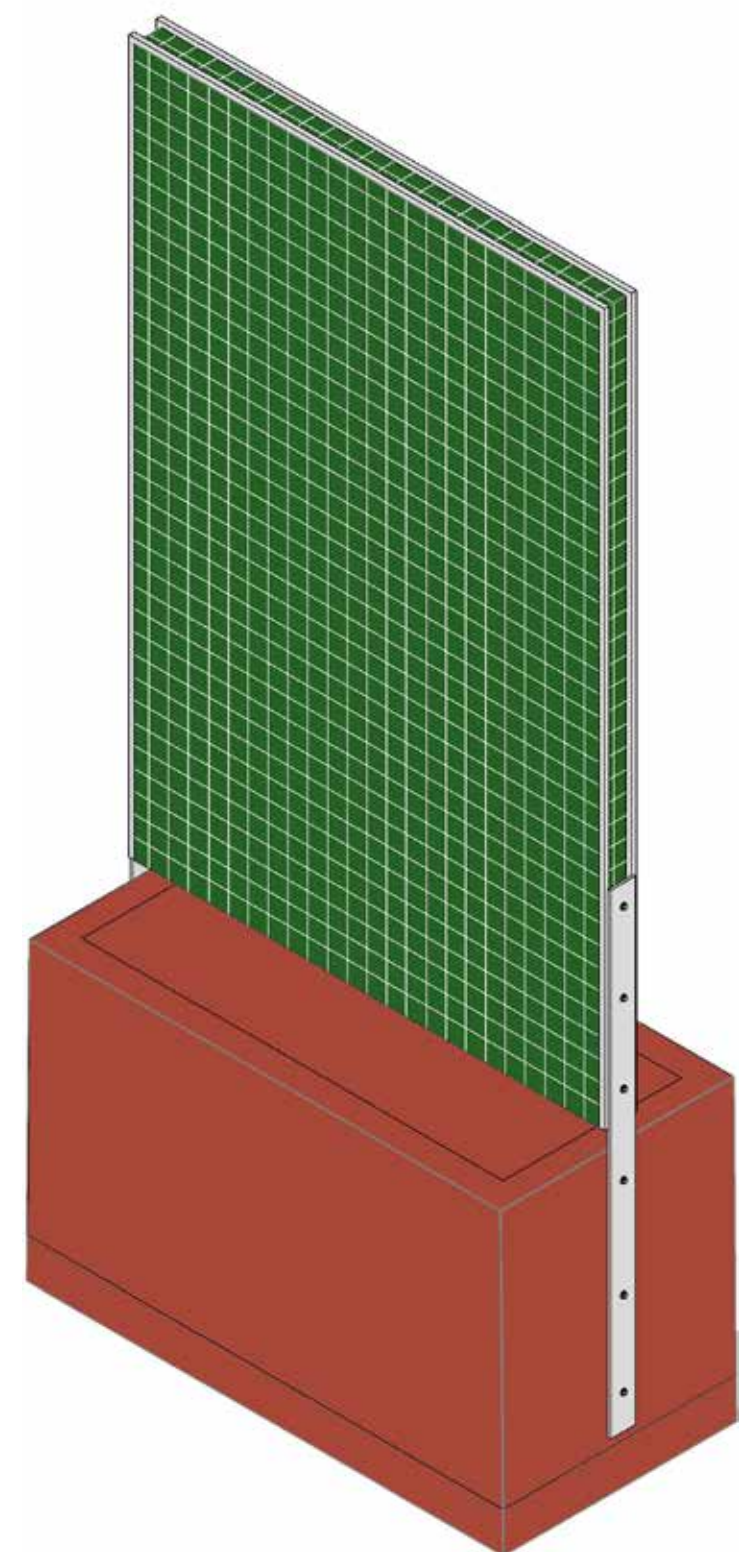
MOURNING



MEMORIALIZIZING



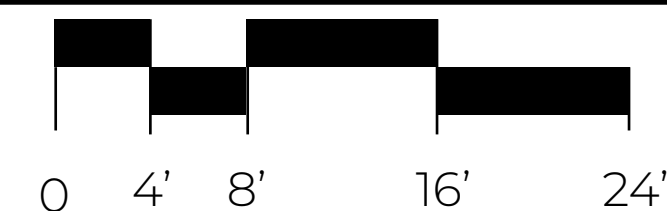
PLANTER WITH TRELLIS ATTACHED



AQUAPONICS DIAGRAM



GARDEN SECTION



LIFE STARTS AGAIN

