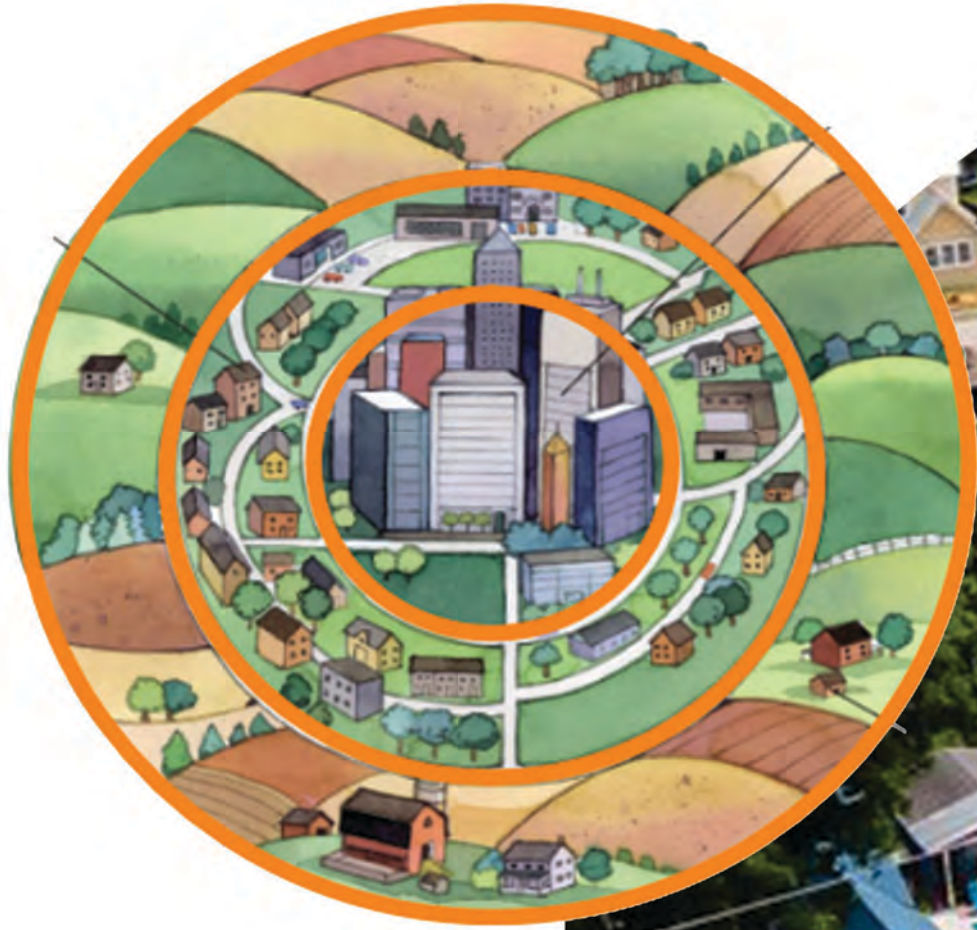


# NEIGHBORHOOD INFILL



CREATING SINGLE-FAMILY AFFORDABLE HOUSING  
IN SAN ANTONIO'S HISTORIC WESTSIDE COMMUNITY

VICTORIA GONZALEZ



W MARTIN ST

W COMMERCE ST

BUENA VISTA ST

N COLORADO ST

W HOUSTON ST

N SANTA ROSA AVE

N FLORES ST

N ZARZAMORA ST

DOLOROSA ST

W NUEVA ST

SW 19TH ST

GUADALUPE ST

S BRAZOS ST

S FRIJO ST

W CESAR CHAVEZ ST

S SANTA ROSA AVE

S FLORES ST

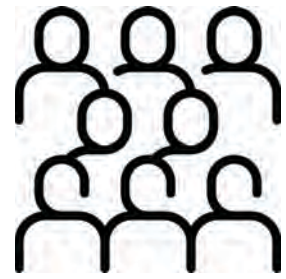
S LAREDO ST

S ALAMO ST





LOCATION - 78207



POPULATION - 51,062



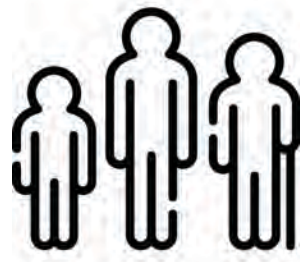
RACE  
 HISPANIC - 89.5%  
 WHITE - 5.5%  
 BLACK - 4.5%



MEDIAN INCOME - \$26,650



LIVING IN POVERTY - 35.7%



MEDIAN AGE - 32.7 YEARS





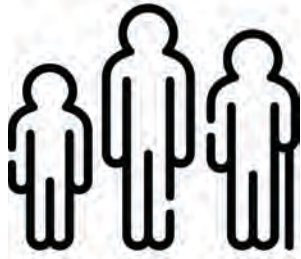
LOCATION - SAN ANTONIO



EMPLOYMENT - 59.8%



MEDIAN INCOME - \$54,923



MEDIAN AGE - 34.1 YEARS



AVERAGE FAMILY SIZE - 3.25



HOMEOWNERSHIP RATE - 52.8%  
MEDIAN RENT - \$1,123





PRICING: \$100K TO \$120K

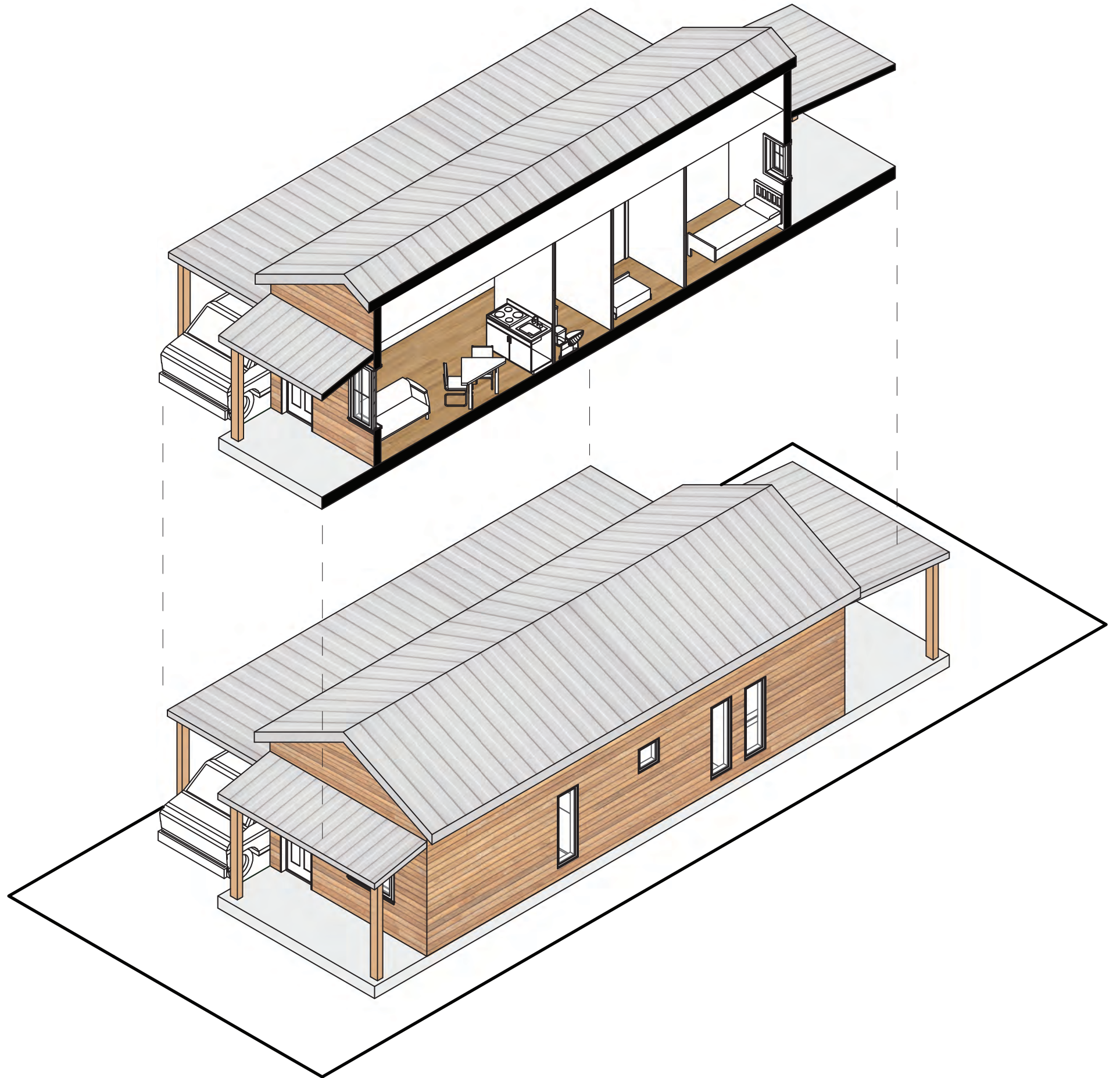
RENT: \$500 TO \$700

UNIT SIZE: 600 SQ FT.

2 BED 1 BATH

LOT SIZE: 2,250 SQ FT.

FEATURES: WATER HEATER,  
WALL AC/HEATING,  
RANGE/OVEN APPLIANCE





0'-0"

10'-0"

15'-0"

10'-0"  
FRONT SETBACK

45'-0"

20'-0"  
REAR SETBACK

30'-0"

10' CARPORT

5'-0"  
SIDE SETBACK

15'-0"

5'-0"  
SIDE SETBACK

75'-0"

15'-0"

10'-0"

0'-0"

0'-0"

10'-0"

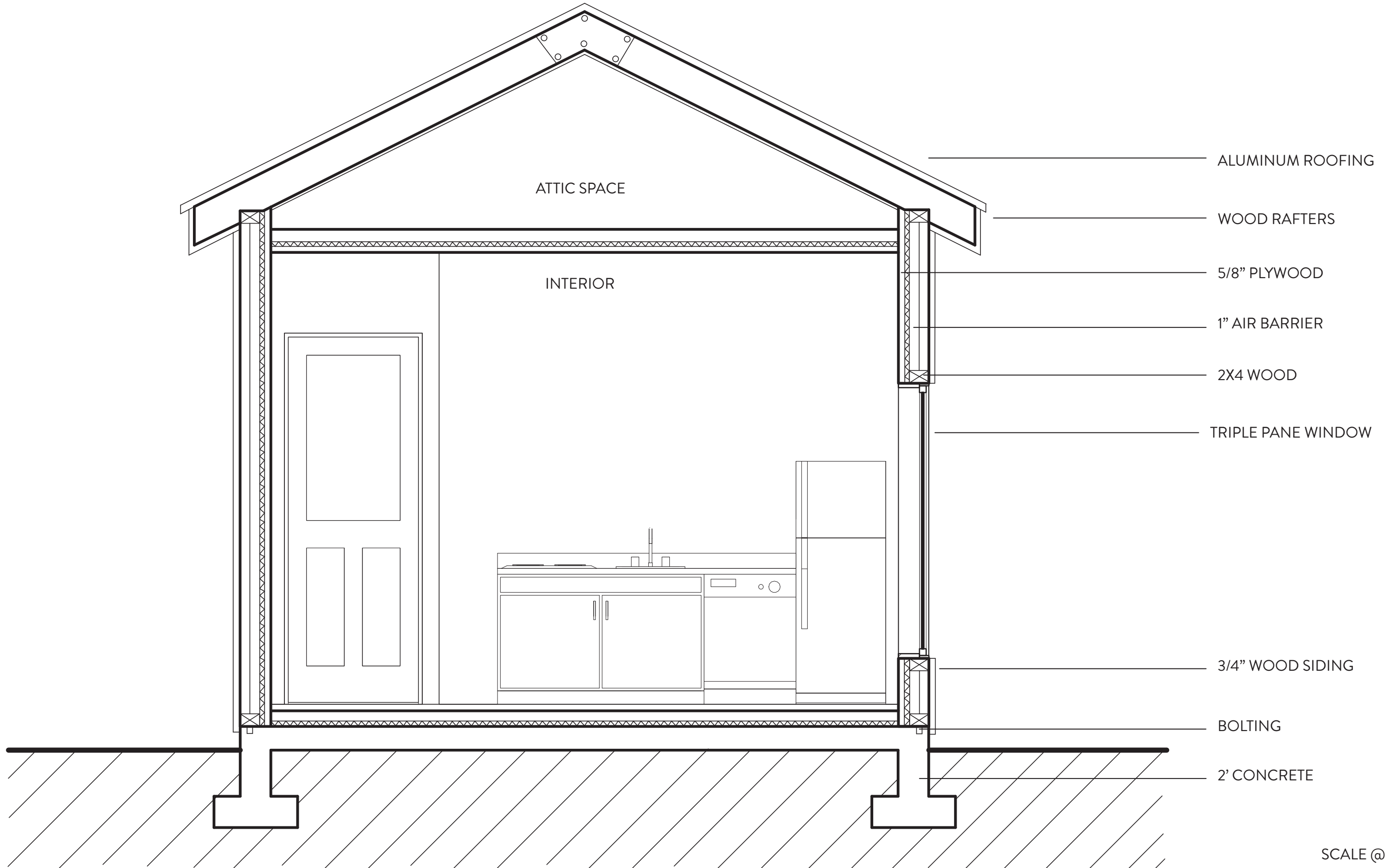
15'-0"

15'-0"

10'-0"

0'-0"

SCALE @ 1/8" = 1'-0"



SCALE @ 1/2" = 1'- 0"



SAN FERNANDO STREET

CIBOLO STREET

TORREON STREET

SABINAS STREET

1922

1918

1912

1910

1906

1902

809



SCALE @ 1:30



